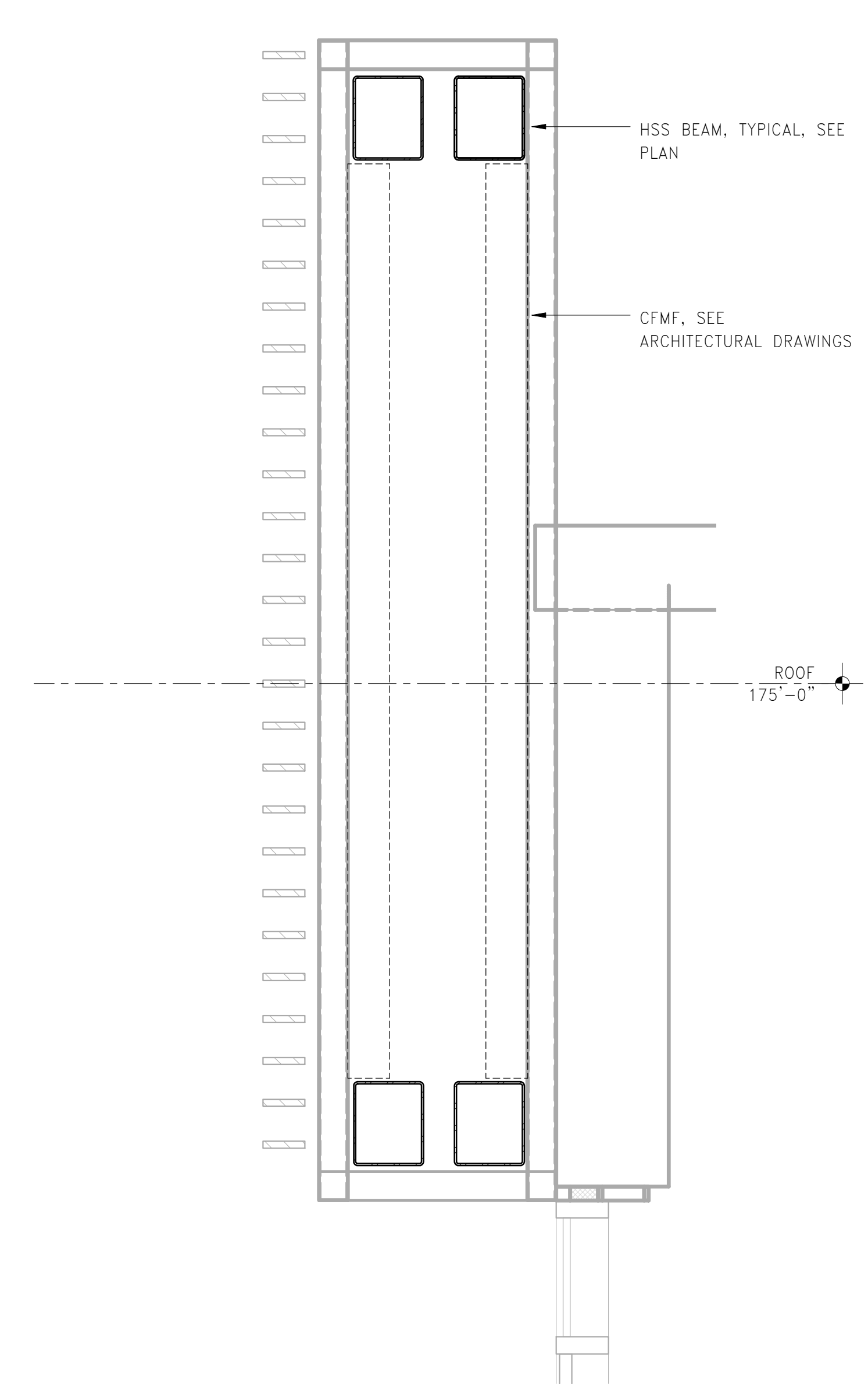
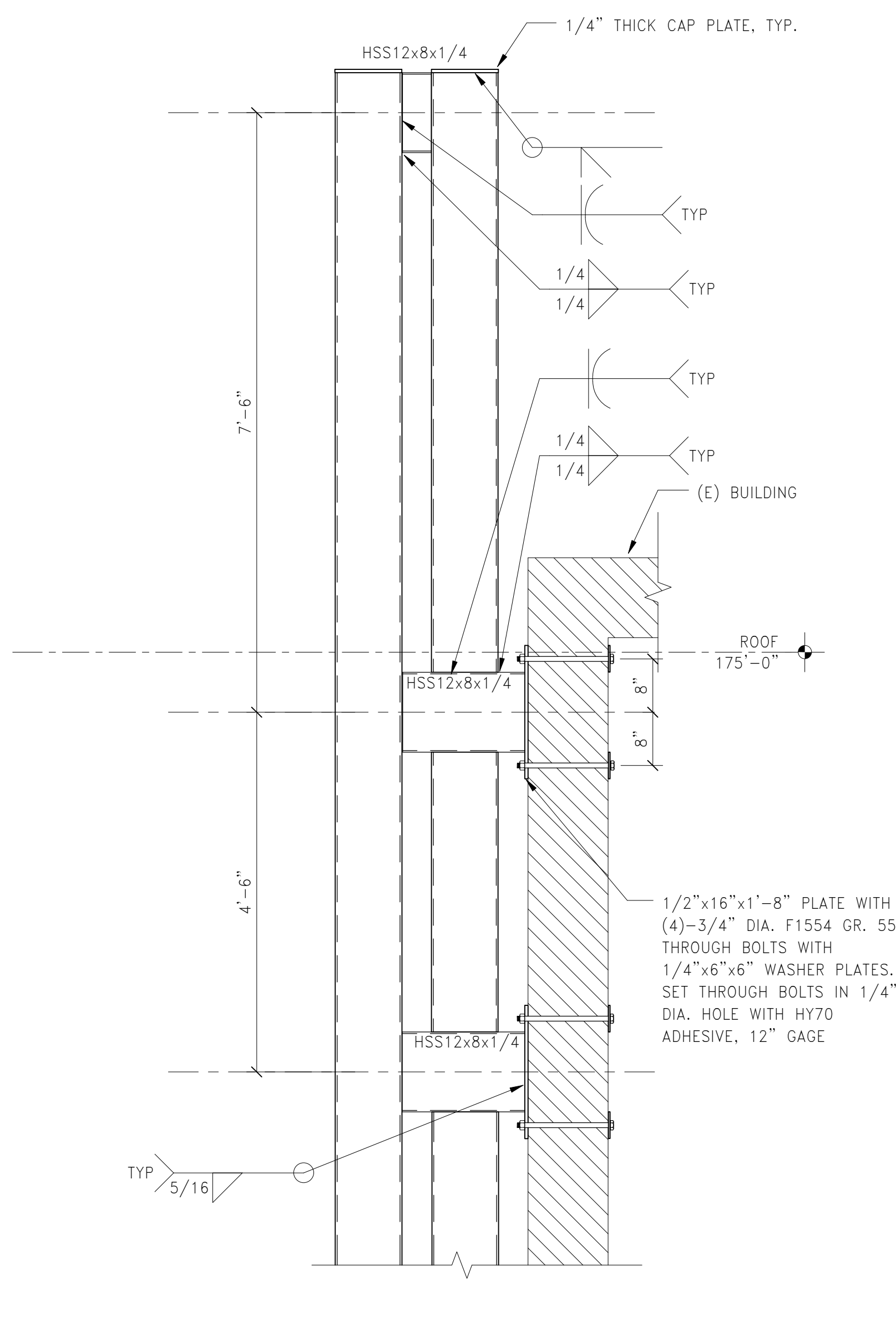


REVISIONS		
NUMBER	DESCRIPTION	DATE

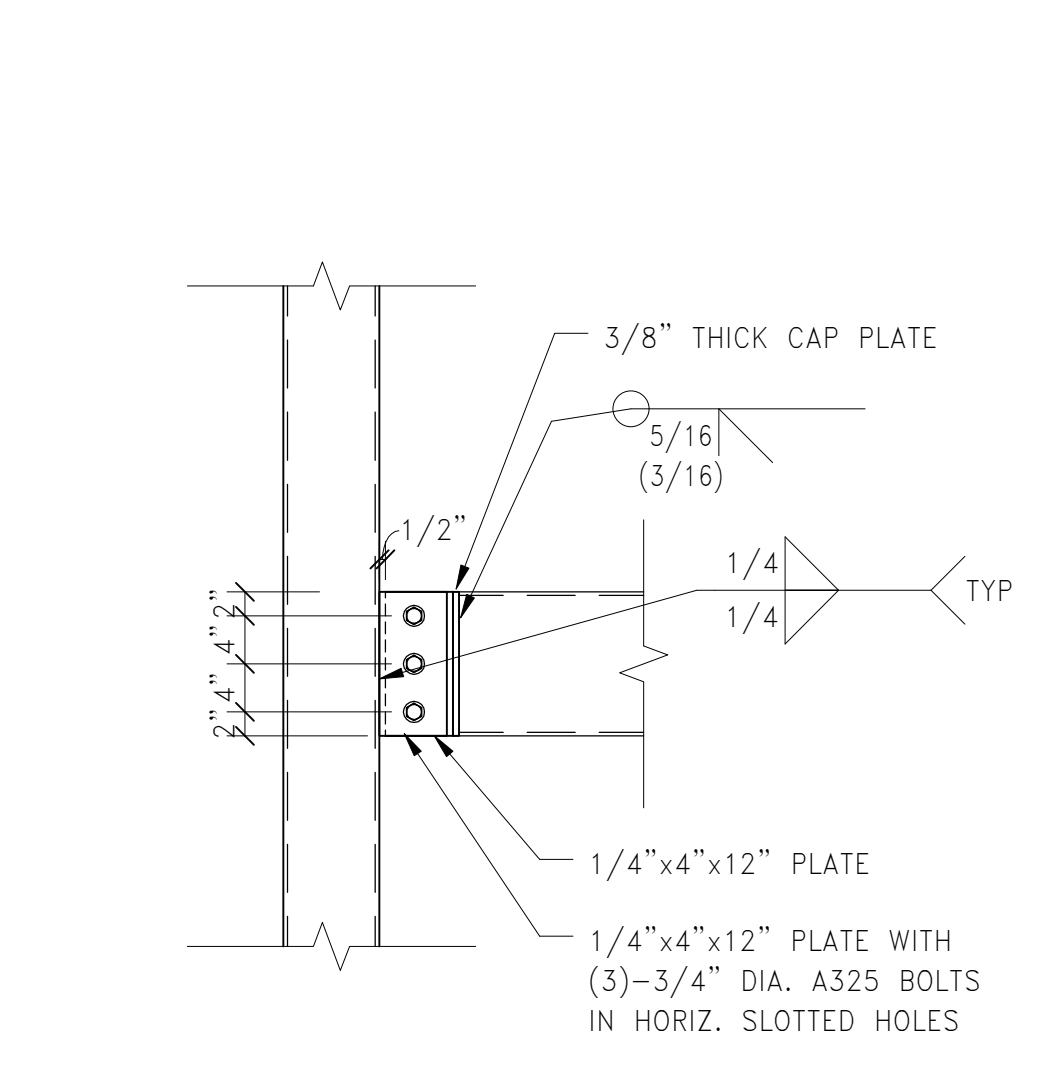
STAMP



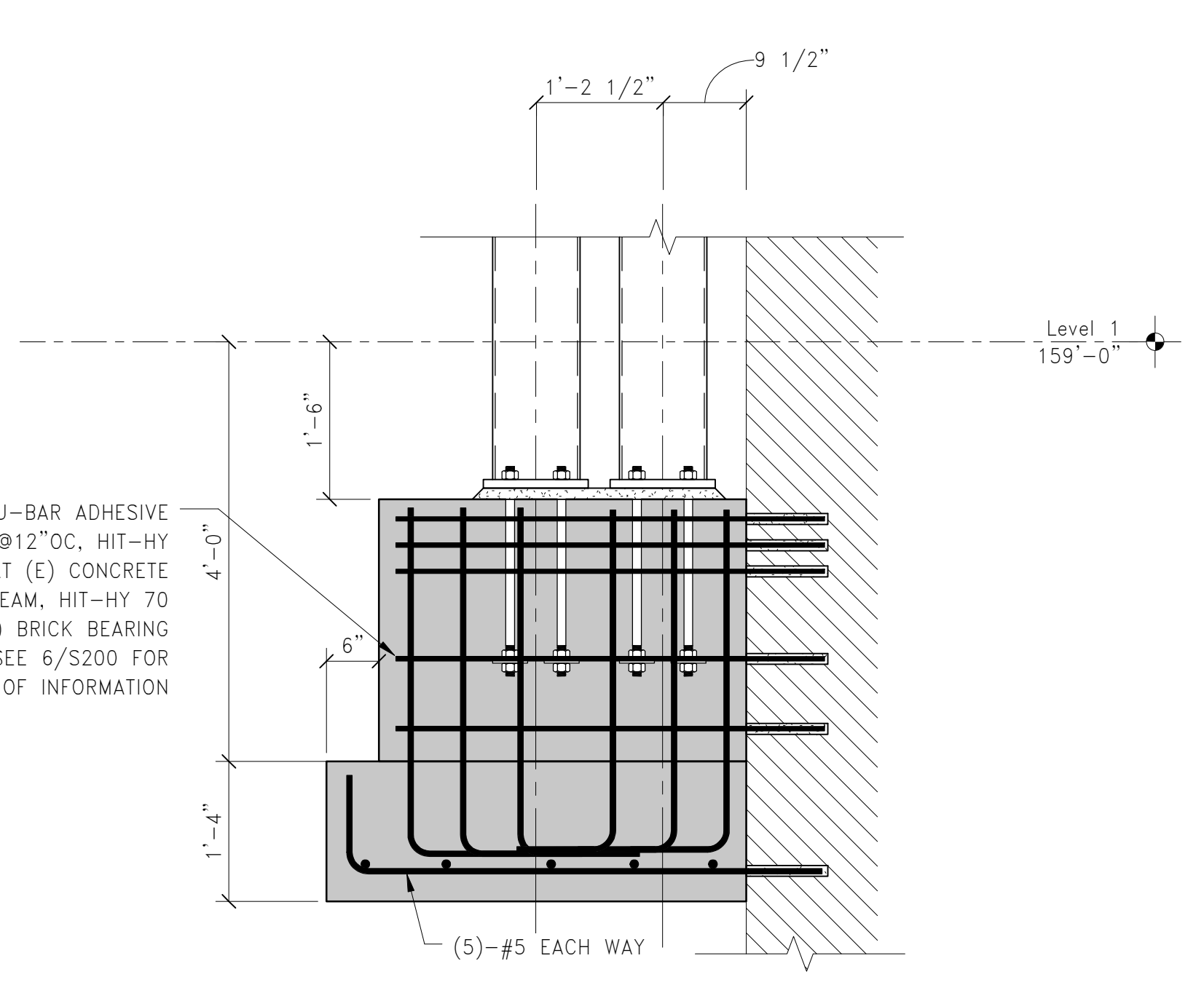
1 SECTION
 3/4" = 1'-0"



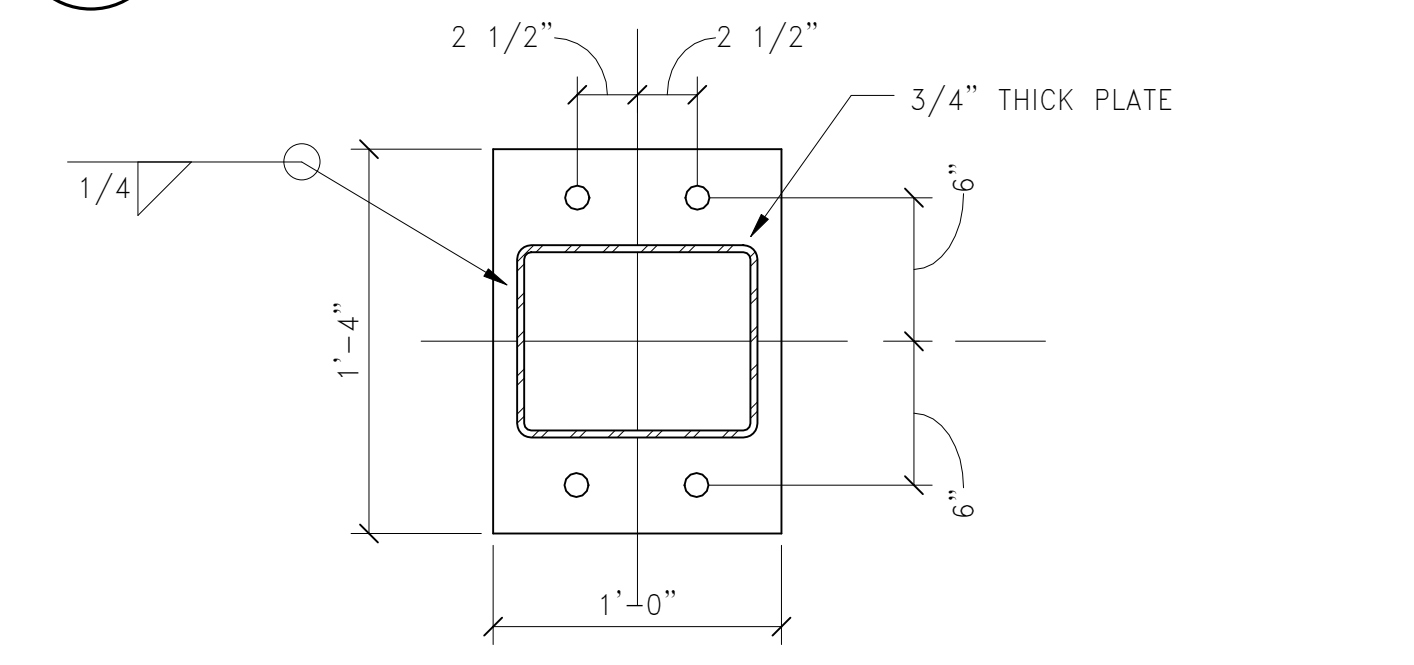
2 SECTION
 3/4" = 1'-0"



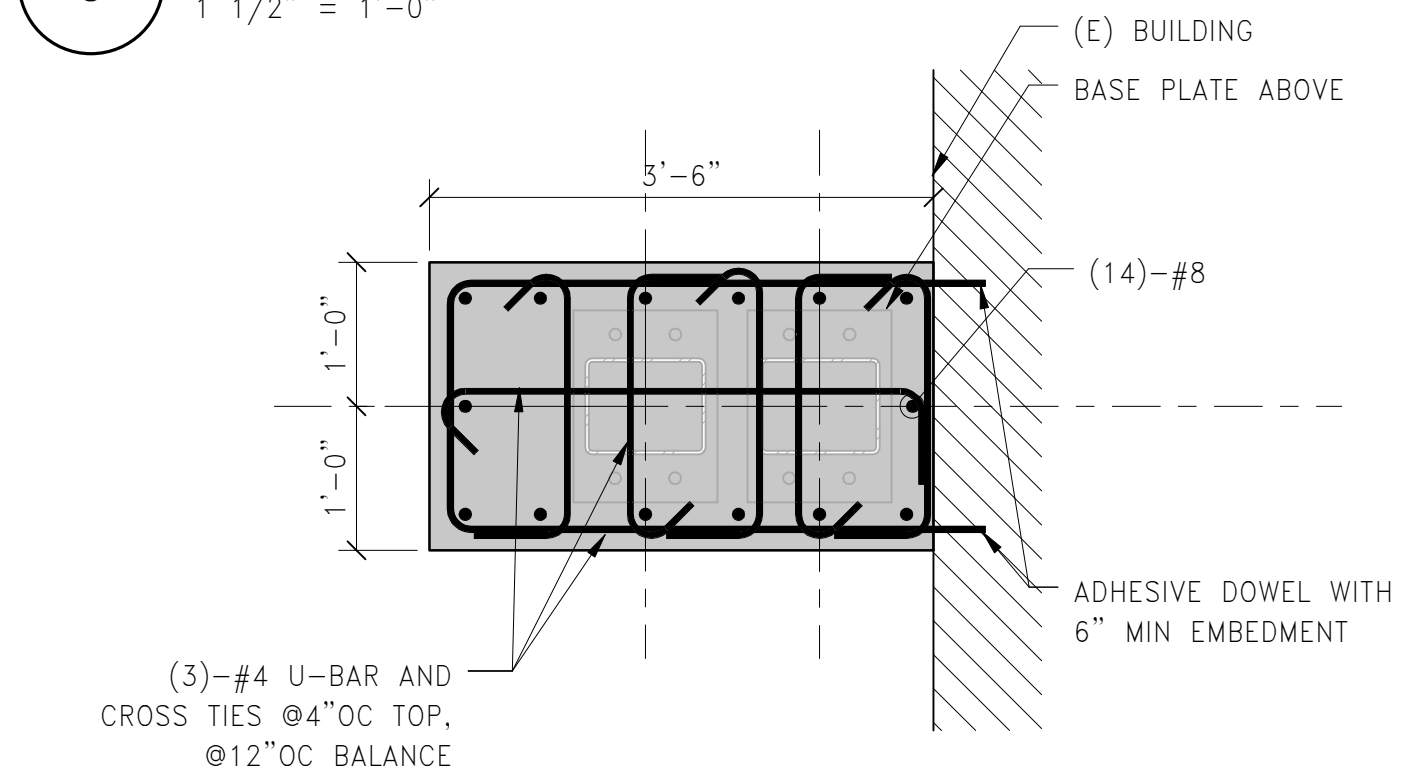
3 SECTION
 3/4" = 1'-0"



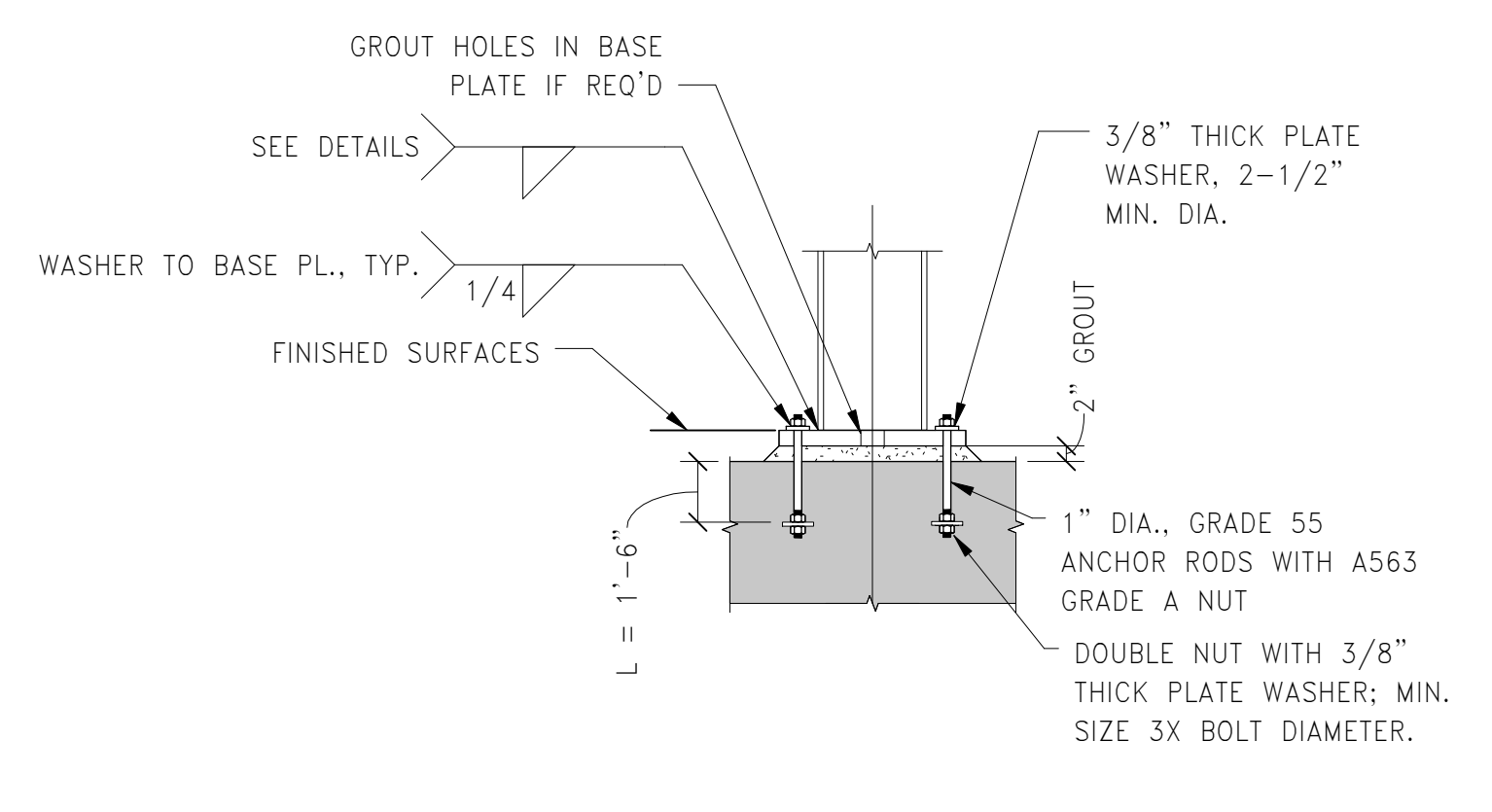
4 SECTION
 3/4" = 1'-0"



5 BASE PLATE TYPE BP1
 1 1/2" = 1'-0"



6 PILASTER PLAN DETAIL
 3/4" = 1'-0"



7 BASE PLATE DETAIL
 1/2" = 1'-0"

- BASE PLATE NOTES:
- ALL BASE PLATES ARE CENTERED ON GRID LINES U0N.
 - PROVIDE LEVELING NUTS AND SHIM PLATES AS REQUIRED TO MAINTAIN COLUMN LEVELNESS.
 - MATCH SURFACE PREPARATION AND FINISH OF BEARING PLATE, ANCHOR RODS, WASHERS, AND PLATE WASHERS TO THAT OF COLUMNS.
 - WASHER PLATES SHALL BE A36.
 - BOLT LOCATIONS VARY, SEE BASE PLATE DETAILS FOR LOCATIONS.
 - SET ANCHOR RODS WITH TEMPLATE.