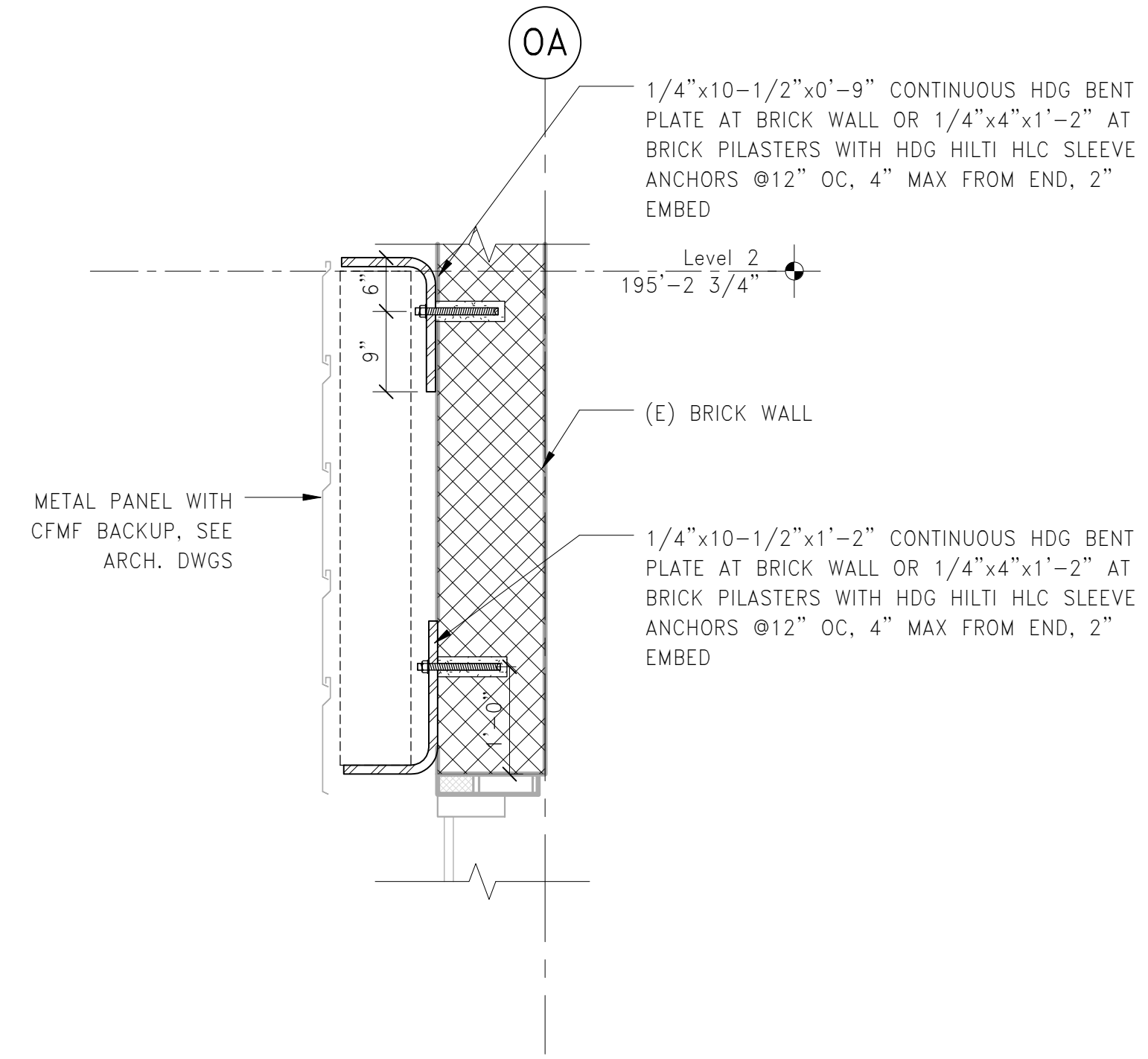


1 SECTION
3/4" = 1'-0"



2 SECTION
3/4" = 1'-0"

MPA MARGULIES PERRUZZI ARCHITECTS
 308 Congress Street | Boston, MA 02210 | 617.482.2322 | www.mpa-architects.com
 Design for the way you work.

CLIENT INFORMATION
AS CLOCK TOWER
 OWNER, LLC c/o
 SARACEN
 PROPERTIES
 MILL & MAIN
 RENOVATION
 PHASE 1
 146 MAIN STREET
 MAYNARD, MA 01751

CONSULTANT INFORMATION
MEP ENGINEERS:
 CHASE CONSULTING ENGINEERS
 24 HARTWELL AVE., 3RD FLOOR
 LYNNINGTON, MA 02421
 781.372.3200

CIVIL ENGINEERS:
 MCDONALD ENGINEERING
 21 CENTER PLAZA, SUITE 400
 BOSTON, MA 02108
 617.538.0063

HARDWARE CONSULTANT:
 CAMPBELL-MCCABE, INC.
 1 LOGAN SQUARE PLACE
 LYNNINGTON, MA 02424
 781.899.8822

STRUCTURAL ENGINEER:
 SIMPSON GIMPERTZ & HEGGER
 41 SEYON STREET, BLDG 1, SUITE 500
 WALTHAM, MA 02453
 781.947.9026

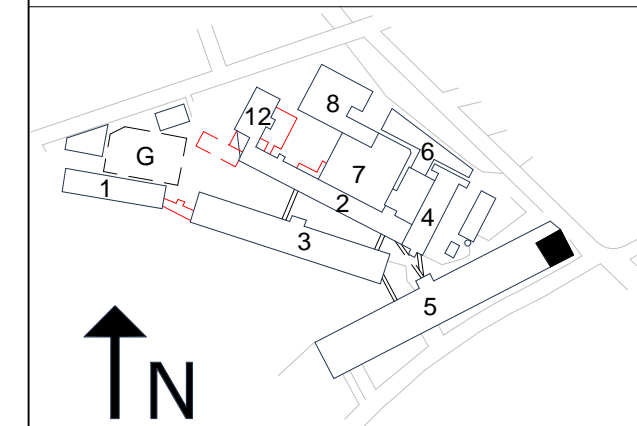
SPECIFICATIONS:
KALIN ASSOCIATES
 200 WASHINGTON ST., # 2
 BOSTON, MA 02108
 617.964.5177

LIGHTING CONSULTANT:
 SLADEN FENSTEIN INTEG.
 250 WASHINGTON AVE., # 305
 BOSTON, MA 02108
 617.267.9500

LANDSCAPE DESIGN:
 BROWN, RICHARDSON, & ROWE
 800 WASHINGTON ST., 3RD FLOOR
 BOSTON, MA 02109
 617.542.8852

GEOTECHNICAL CONSULTANT:
 HALEY & ALDRICH, INC.
 405 MEDFORD STREET, SUITE 2000
 BOSTON, MA 02129
 617.856.7597

REVISIONS		
NUMBER	DESCRIPTION	DATE



DATE: 10/19/15
 SCALE: 3/4" = 1'-0"
 DRAWN BY: MSS
 PROJECT NUMBER: SAR15A.00
 DRAWING TITLE:
**NORTH LOBBY SECTIONS
 & DETAILS**

5S-201
 DRAWING NUMBER