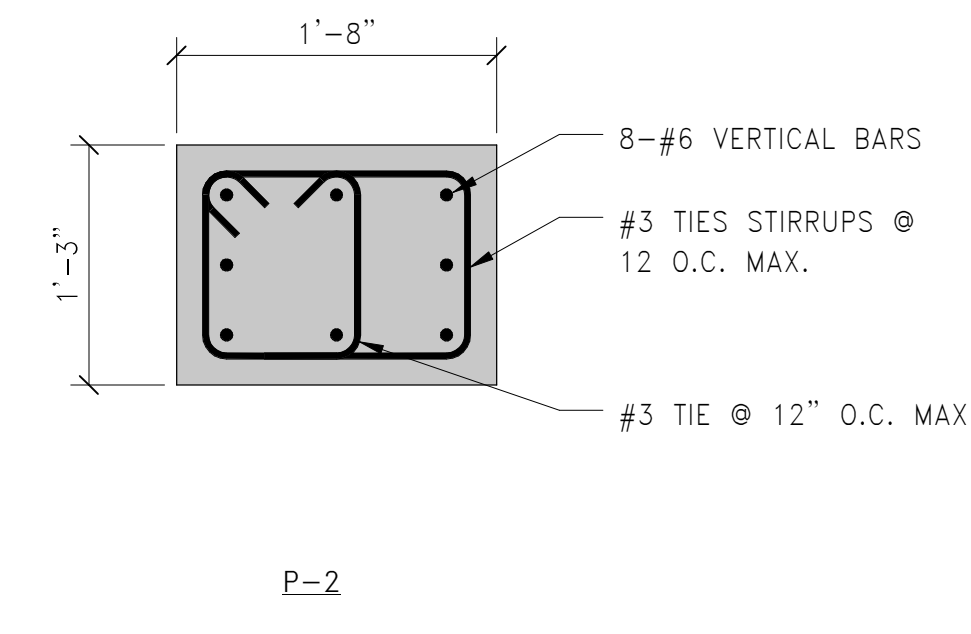
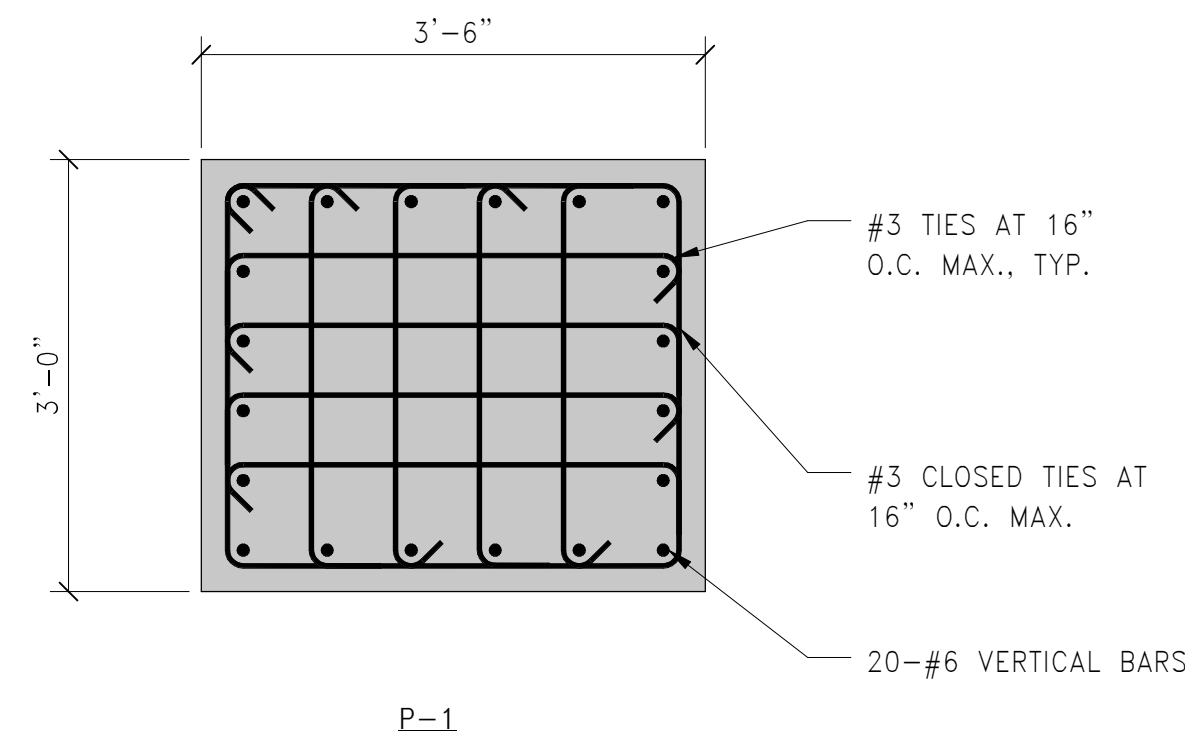


NOTES:  
1. SOG NOT SHOWN. SEE DETAIL 6 ON S-010 FOR SOG AT PIERS.

**1** FOOTING DETAIL  
3/4" = 1'-0"



NOTES:  
1. PROVIDE STANDARD HOOKS INTO FOOTING BELOW

**2** PIER DETAILS  
3/4" = 1'-0"

**MPA MARGULIES PERRUZZI ARCHITECTS**  
308 Congress Street | Boston, MA 02210 | 617.482.2322 | www.mpp-architects.com  
Design for the way you work.

CLIENT INFORMATION  
**AS CLOCK TOWER OWNER LLC c/o SARACEN PROPERTIES**  
MILL & MAIN RENOVATION PHASE 1  
146 MAIN STREET  
MAYNARD, MA 01751

CONSULTANT INFORMATION

**MPE ENGINEERS**  
MHA CONSULTING ENGINEERS  
24 HARTWELL AVE., 3RD FLOOR  
LEWINGTON, MA 02421  
781-973-5300

**CIVIL ENGINEERS**  
NITSCH ENGINEERING  
2 CENTER PLAZA, SUITE 400  
BOSTON, MA 02108  
617-545-8552

**HARDWARE CONSULTANT**  
CAMPBELL-MCCABE, INC.  
100 WASHINGTON ST., 2ND FLOOR  
MAYNARD, MA 01754  
781-899-8822

**STRUCTURAL ENGINEER**  
SIMPSON GUMPERTZ & HEGGER  
41 SECON STREET, BLDG 1, SUITE 500  
MAYNARD, MA 01754  
781-302-0000

**SPECIFICATIONS**  
KALIN ASSOCIATES  
100 WASHINGTON ST., 2ND FLOOR  
WEST NEWTON, MA 02459  
617-984-5477

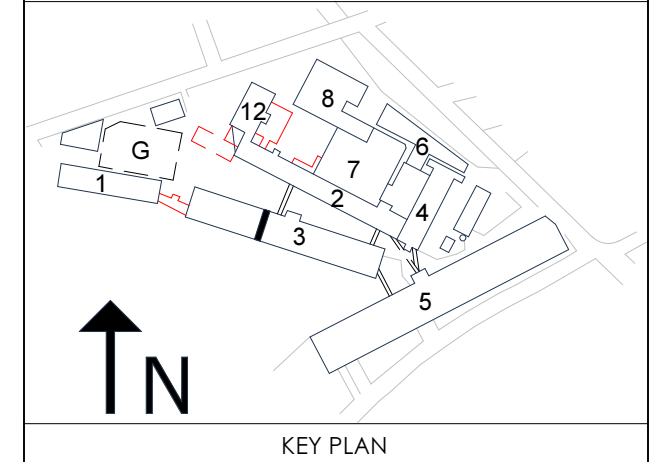
**LANDSCAPE DESIGN**  
BROWN, RICHARDSON, & ROWE  
100 WASHINGTON ST., 3RD FLOOR  
BOSTON, MA 02109  
617-542-8552

**LIGHTING CONSULTANTS**  
SLADEN FENSTEIN INTEG.  
100 WASHINGTON ST., 3RD FLOOR  
BOSTON, MA 02109  
617-537-9950

**GEOTECHNICAL CONSULTANT**  
HALEY & ALDRICH, INC.  
485 MEDFORD STREET, SUITE 2000  
MAYNARD, MA 01754  
617-882-7291

REVISIONS		
NUMBER	DESCRIPTION	DATE

STAMP



KEY PLAN  
DATE: 10/19/2015  
SCALE: As Indicated  
DRAWN BY: MAT  
PROJECT NUMBER: SAR15A.00  
DRAWING TITLE

**ENTRY DETAILS**  
**3S-602**  
DRAWING NUMBER