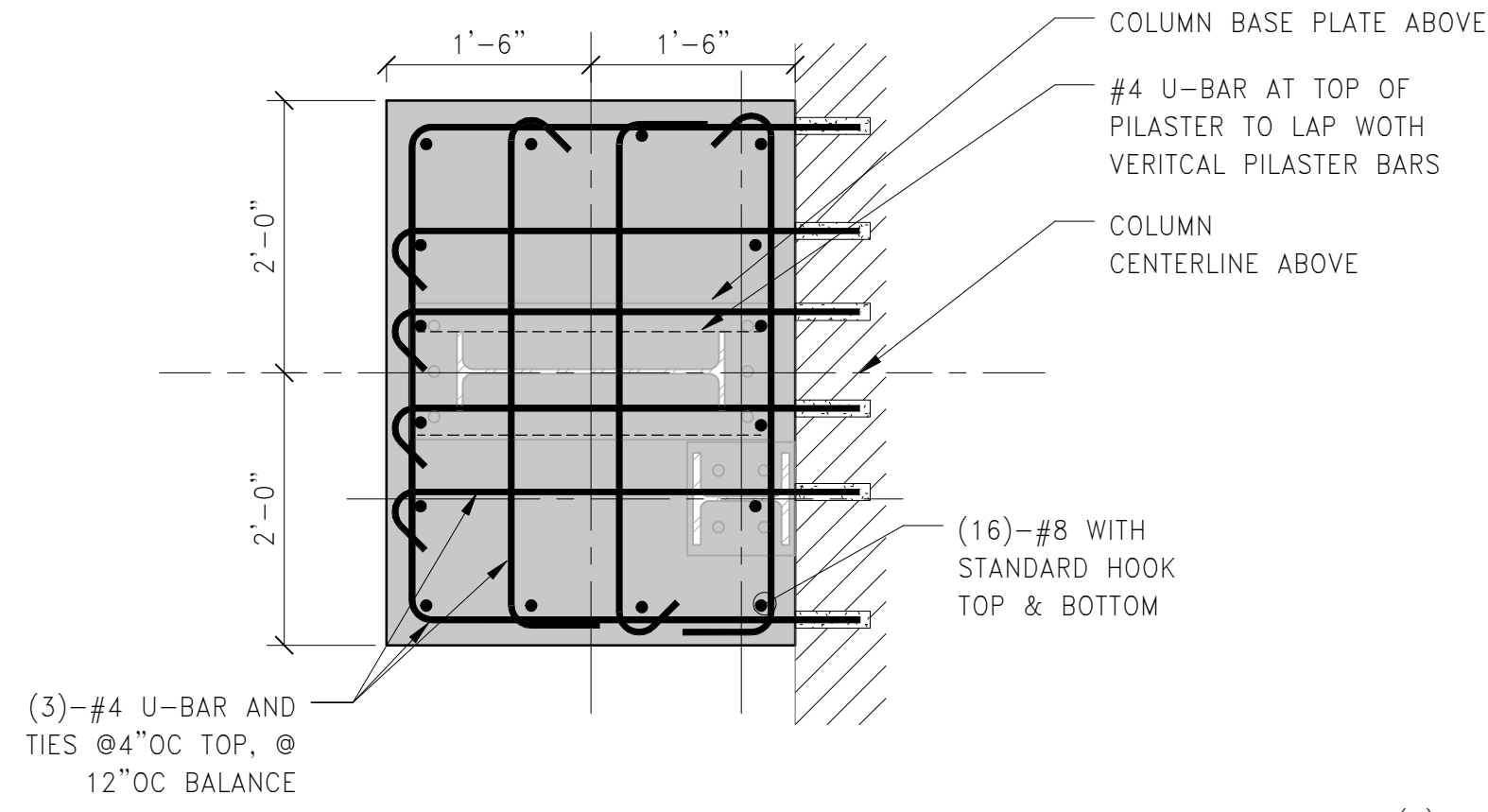
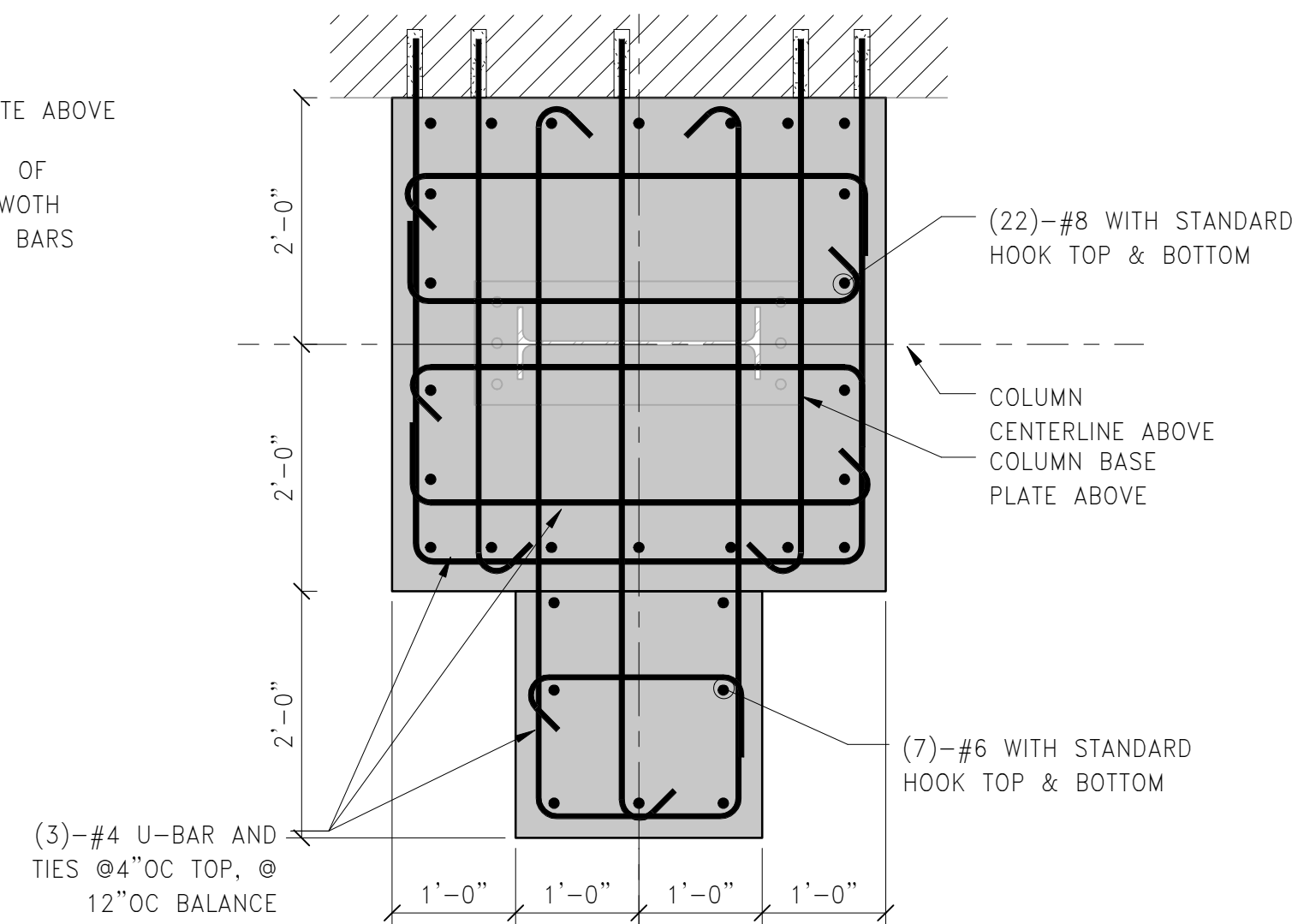


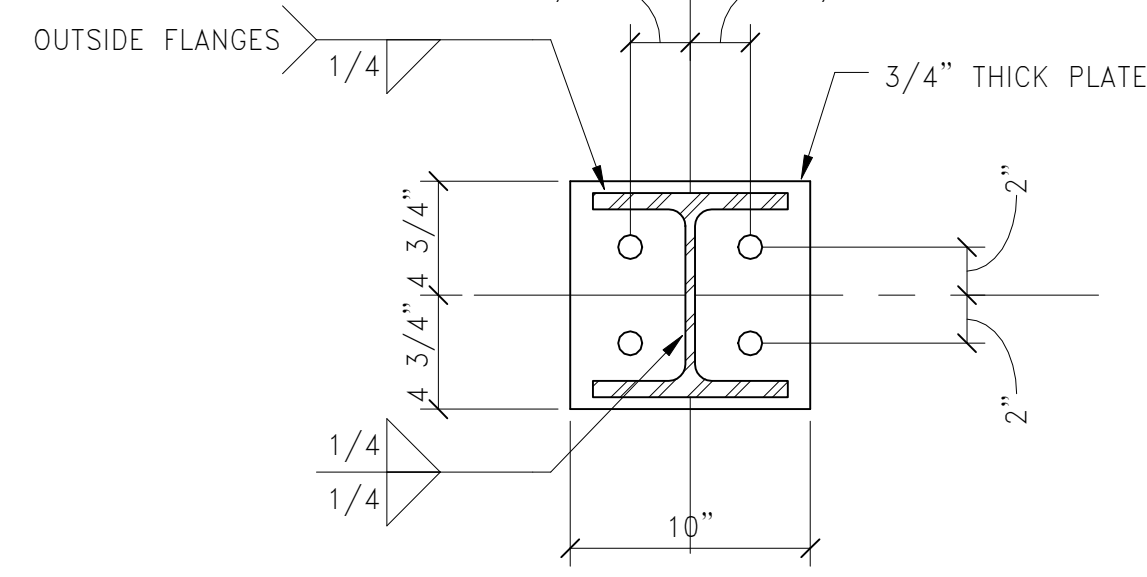
1 PILASTER TYPE P1  
3/4" = 1'-0"



2 PILASTER TYPE P2  
3/4" = 1'-0"

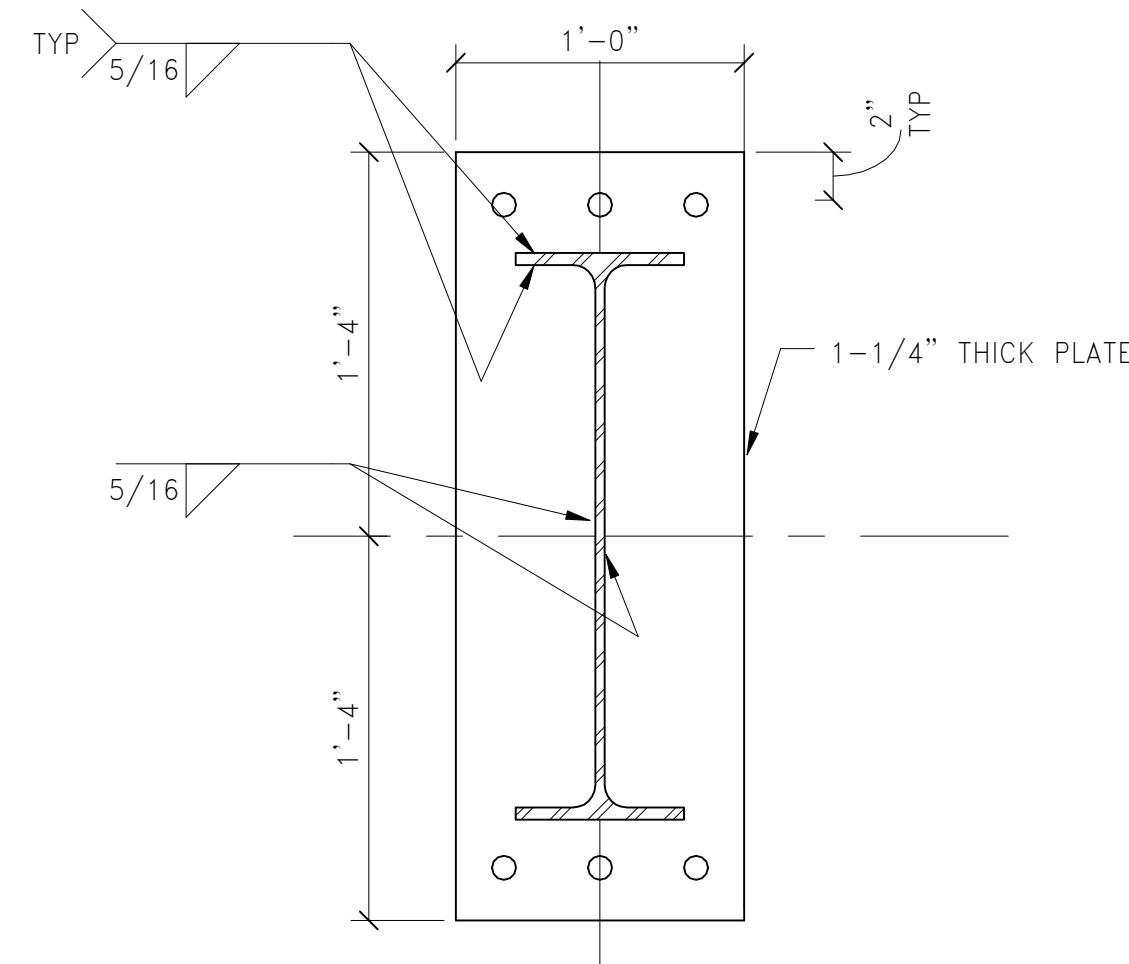


3 PILASTER TYPE P3  
3/4" = 1'-0"



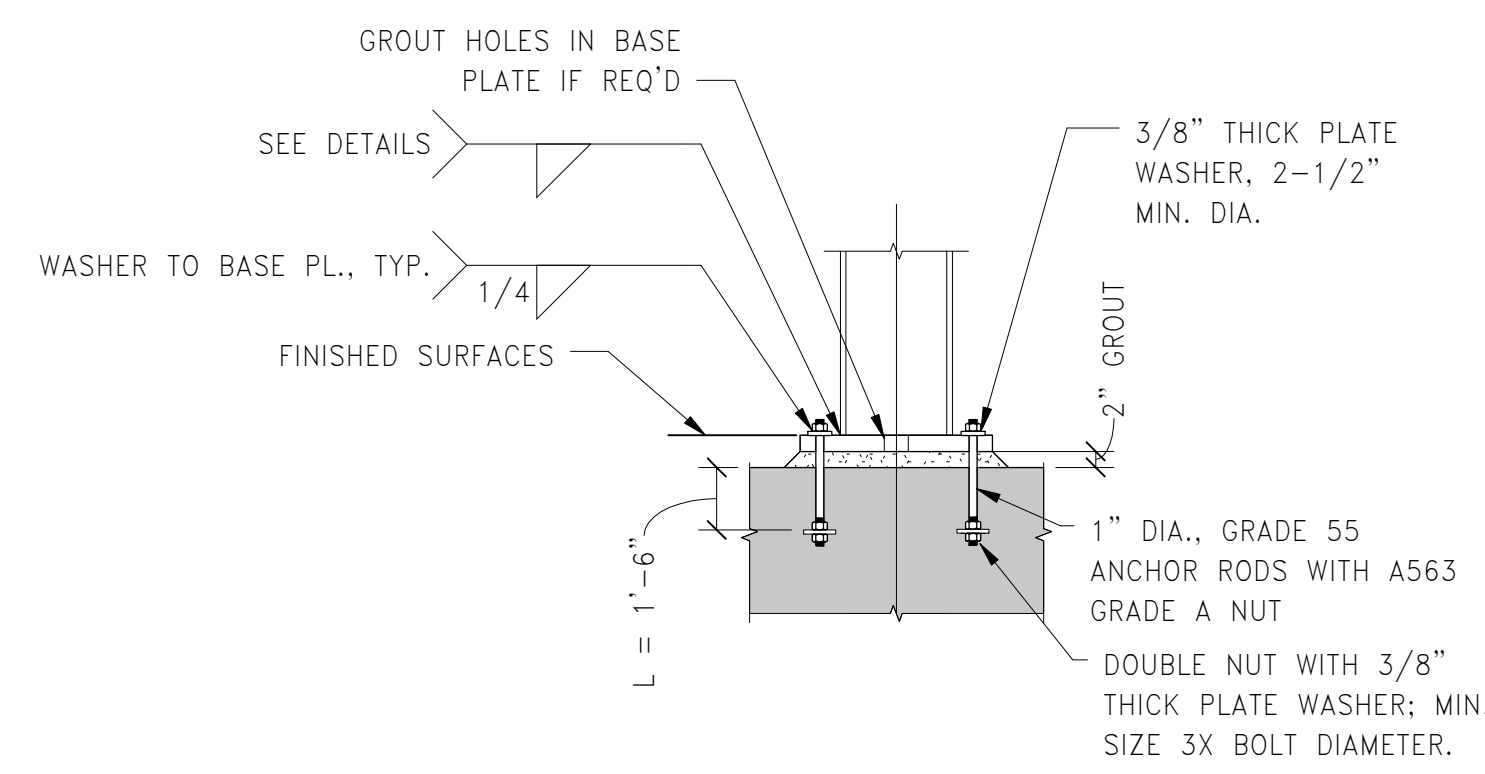
BASE PLATE TYPE 1

4 BASE PLATE LAYOUT  
1 1/2" = 1'-0"



BASE PLATE TYPE 2

5 ANCHOR ROD DETAIL  
1/2" = 1'-0"



BASE PLATE NOTES:

1. ALL BASE PLATES ARE CENTERED ON GRID LINES U0N.
2. PROVIDE LEVELING NUTS AND SHIM PLATES AS REQUIRED TO MAINTAIN COLUMN LEVELNESS.
3. MATCH SURFACE PREPARATION AND FINISH OF BEARING PLATE, ANCHOR RODS, WASHERS, AND PLATE WASHERS TO THAT OF COLUMNS.
4. WASHER PLATES SHALL BE A36.
5. BOLT LOCATIONS VARY. SEE BASE PLATE DETAILS FOR LOCATIONS.
6. SET ANCHOR RODS WITH TEMPLATE.

**MPA MARGULIES PERRUZZI ARCHITECTS**  
308 Congress Street | Boston, MA 02210 | 617.482.2322 | www.mpa-architects.com  
Design for the way you work.

CLIENT INFORMATION  
**AS CLOCK TOWER**  
OWNER, LLC c/o  
SARACEN  
PROPERTIES  
MILL & MAIN  
RENOVATION  
PHASE 1  
146 MAIN STREET  
MAYNARD, MA 01754

CONSULTANT INFORMATION  
MEP ENGINEERS  
**CLINTON TING ENGINEERS**  
24 HAWTHORNE AVE., 3RD FLOOR  
LAWRENCE, MA 02461  
781.372.3200  
CAMPBELL-MCCABE, INC.  
1 LOCKWOOD SQUARE PLACE  
LAWRENCE, MA 02454  
781.689.8822  
STRUCTURAL ENGINEER  
**SIMPSON GIMPERTZ & HEGGER**  
41 SEYON STREET, BLDG 1, SUITE 500  
WALTHAM, MA 02453  
781.951.9826  
CIVIL ENGINEERS  
**KALIN ASSOCIATES**  
1055 WASHINGTON ST., #2  
METHUEN, MA 01842  
617.964.5177  
LANDSCAPE DESIGN  
**BROWN, RICHARDSON, & ROWE**  
850 WASHINGTON AVE., # 305  
BOSTON, MA 02111  
617.542.8852  
LIGHTING CONSULTANTS  
**SLADEN FENSTEIN INTEG.**  
250 WASHINGTON AVE., # 305  
BOSTON, MA 02111  
617.267.9500  
GEOTECHNICAL CONSULTANT  
**HALEY & ALDRICH, INC.**  
405 MEDFORD STREET, SUITE 2000  
BOSTON, MA 02129  
617.856.1591

REVISIONS		
NUMBER	DESCRIPTION	DATE

STAMP



DATE: 10/19/2015  
SCALE: As Indicated  
DRAWN BY: MSS  
PROJECT NUMBER: SAR15A.00  
DRAWING TITLE

SECTIONS & DETAILS  
**1S-201**  
DRAWING NUMBER