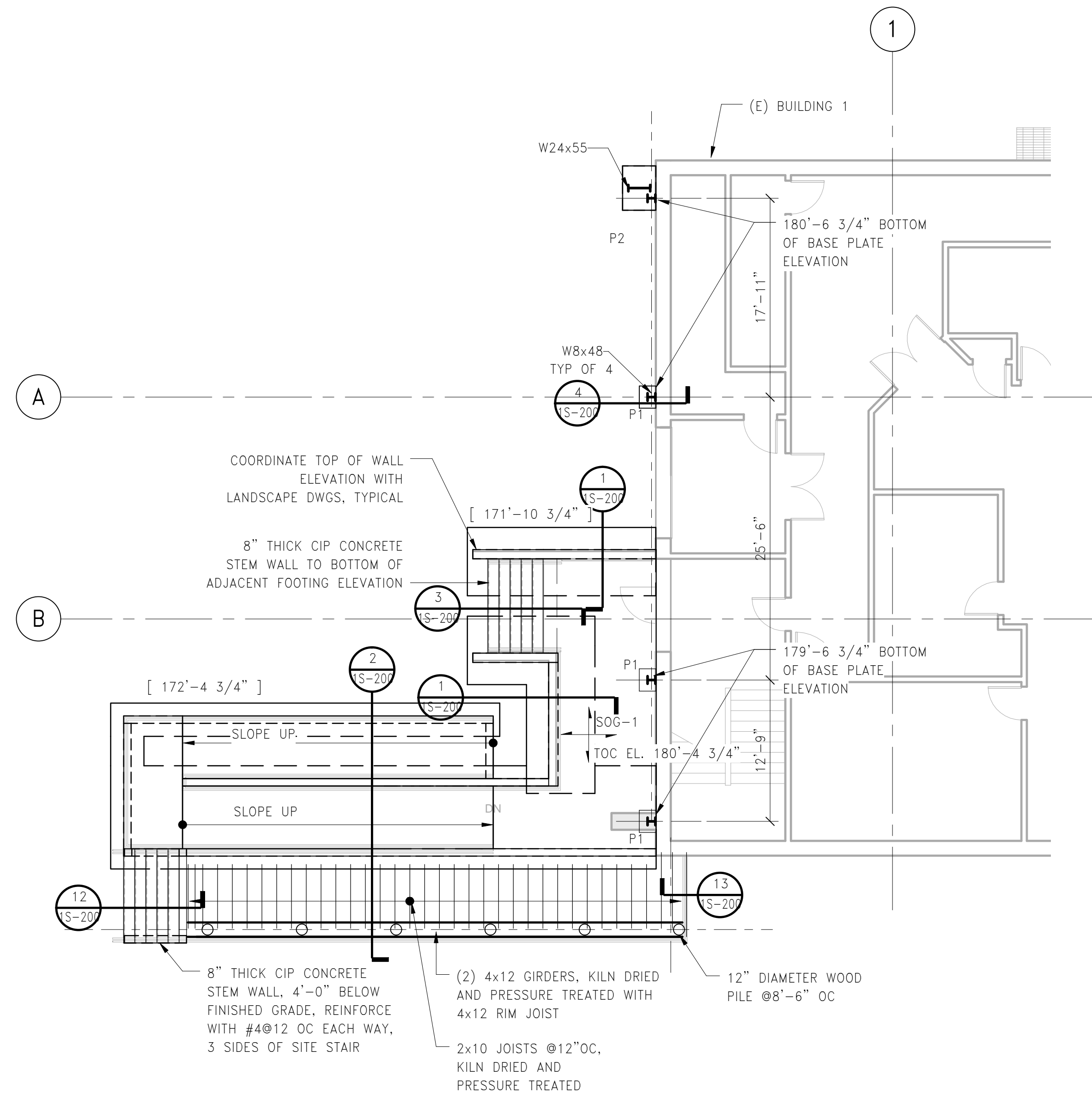


SLAB_NOTE_S0C-1
5" MIN. NORMAL WEIGHT CONCRETE SLAB-ON-GRADE REINFORCED WITH #4@15" OC EACH DIRECTION. PLACE ON 6" CRUSHED STONE SUBBASE ON COMPACTED SUBGRADE. SAW CUT CONTROL JOINTS AT 8'-0" OC MAX SPACING AND AT RE-ENTRANT CORNERS.

PLAN NOTES:

- PN1. SEE PLAN FOR TOP OF CONCRETE ELEVATION.
- PN2. [X'-X"] INDICATES BOTTOM OF FOOTING ELEVATION.
- PN3. SAW-CUT CONTROL JOINTS IN SLAB-ON-GRADE AT ALL COLUMN CENTERLINES AND AT MID-BAYS. RE-ENTRANT CORNERS ARE PROHIBITED.
- PN4. GEOTECHNICAL ENGINEER MUST APPROVE ALL FOOTING BASES PRIOR TO CONCRETE PLACEMENT.
- PN5. CONSULT ENGINEER OF RECORD (EOR) IF FIELD CONDITIONS REQUIRE ELEVATION CHANGES IN EXCESS OF 1'-0".



LEVEL 1 FRAMING PLAN

1/8" = 1'-0"

MPA MARGULIES PERRUZZI ARCHITECTS
388 Congress Street | Boston, MA 02210 | 617.482.2322 | www.mpa-architects.com
Design for the way you work.

CLIENT INFORMATION
AS CLOCK TOWER
OWNER, LLC c/o
SARACEN
PROPERTIES
MILL & MAIN
RENOVATION
PHASE 1
146 MAIN STREET
MAYNARD, MA 01754

CONSULTANT INFORMATION

MEP ENGINEERS
NEZ ENGINEERING
24 HAWTHORNE AVE., 3RD FLOOR
LAWRENCE, MA 01840
781.687.3200

HARDWARE CONSULTANT
CAMPBELL-MCCABE, INC.
1 LOCKWOOD AVE., 2ND FLOOR
LAWRENCE, MA 01840
781.689.8822

STRUCTURAL ENGINEER
SIMPSON GIMPERTZ & HEGGER
41 SEYON STREET, BLDG 1, SUITE 500
WALTHAM, MA 02453
781.947.9826

CIVIL ENGINEERS
KALIN ASSOCIATES
1052 WASHINGTON ST., #2
BOSTON, MA 02111
617.964.5177

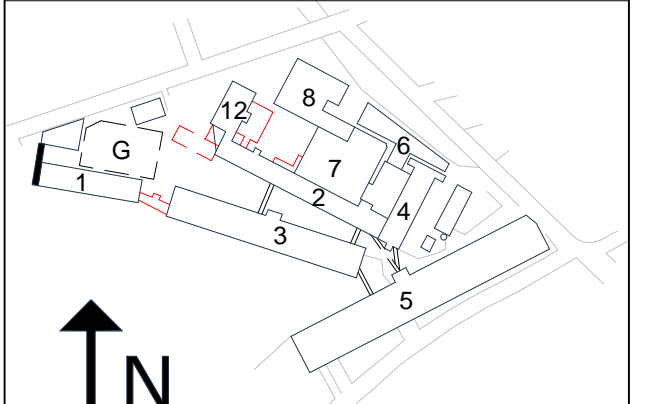
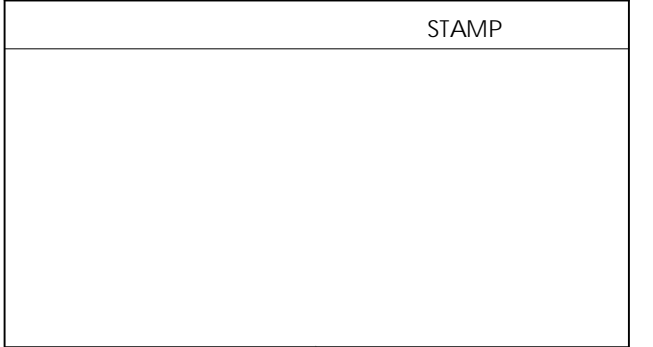
LANDSCAPE DESIGN
BROWN, RICHARDSON, & ROWE
800 STATE ST., 3RD FLOOR
BOSTON, MA 02111
617.542.8852

LIGHTING CONSULTANTS
SLADEN FENSTEIN INTEG.
250 WASHINGTON AVE., # 305
BOSTON, MA 02111
617.267.9500

GEOTECHNICAL CONSULTANT
HALEY & ALDRICH, INC.
405 MEDFORD STREET, SUITE 2000
BOSTON, MA 02129
617.856.1591

REVISIONS

NUMBER	DESCRIPTION	DATE



DATE: 10/19/2015
SCALE: 1/8" = 1'-0"
DRAWN BY: CDC
PROJECT NUMBER: SAR15A.00
DRAWING TITLE: LEVEL 1 FRAMING PLAN

1S-100
DRAWING NUMBER