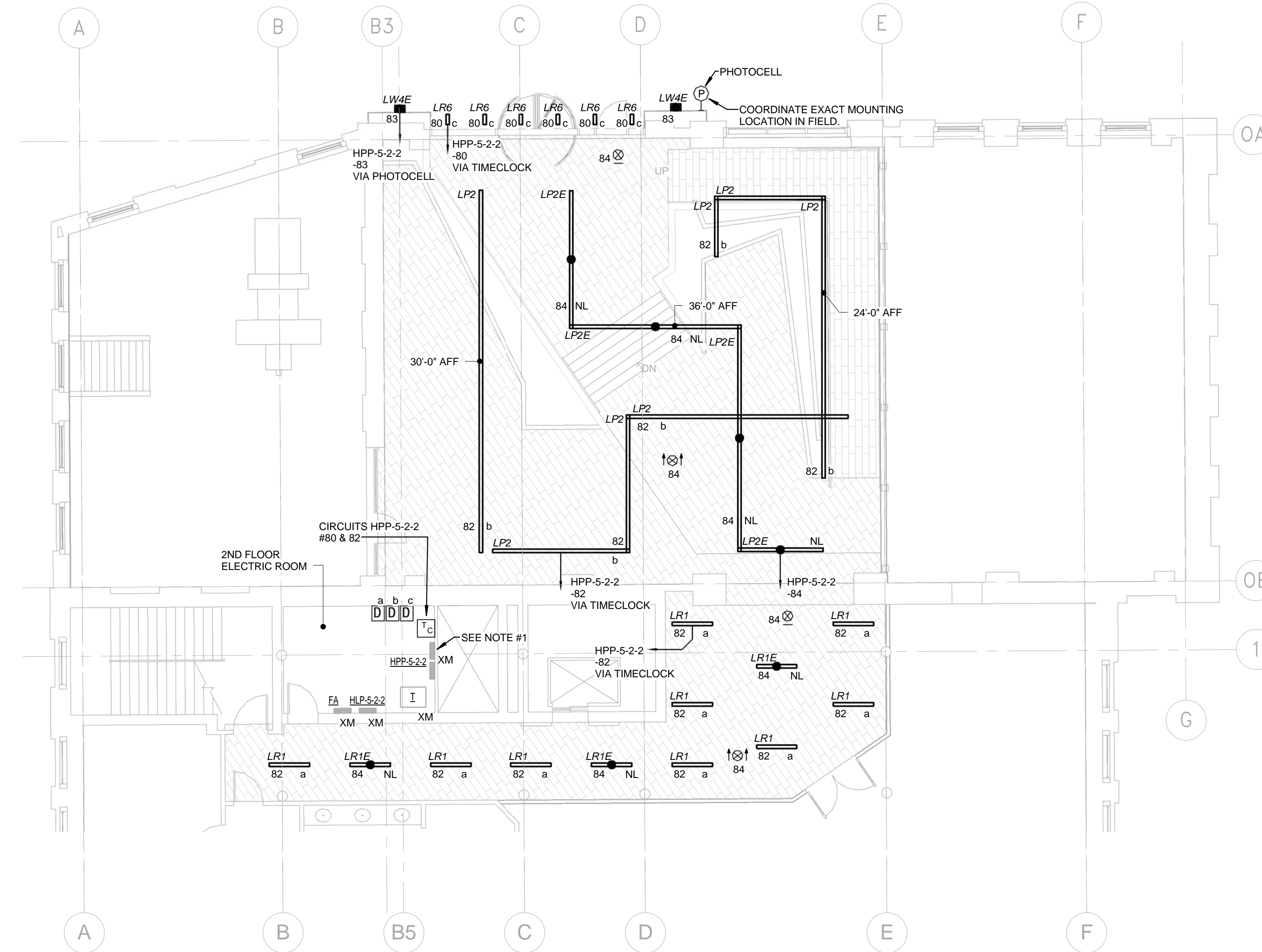


DRAWINGS NOTES

- PROVIDE 4/20A-1P CIRCUIT BREAKERS IN EXISTING PANEL. MATCH NEW CIRCUIT BREAKER CHARACTERISTICS, MANUFACTURER, KAIC, ETC. WITH EXISTING PANEL/BREAKERS.

- DRAWING NOTES - 201  
1/8" = 1'-0"



1 Building 5 - Level 1 S - Electrical Lighting  
5E-204 SCALE: 1/8" = 1'-0"

**MPA MARGULIES PERRUZZI ARCHITECTS**  
308 Congress Street | Boston, MA 02210 | 617.482.2327 | www.mpp-architects.com  
Design for the way you work.

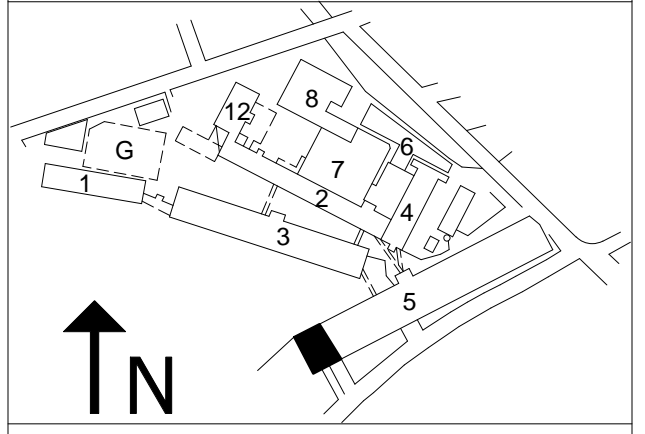
CLIENT INFORMATION  
**MILL & MAIN**  
**AS CLOCK TOWER**  
OWNER LLC  
146 MAIN STREET  
MAYNARD, MA 01754

CONSULTANT INFORMATION

<p><b>MEP ENGINEERS</b> <b>AMA CONSULTING ENGINEERS</b> 24 HARTWELL AVE., 3RD FLOOR EDMUNTON, MA 02021 781-572-5300 www.ama-engineers.com</p> <p><b>HARDWARE CONSULTANT</b> <b>CAMPBELL-MCCABE, INC.</b> 100 STATE ST., 2ND FLOOR MAYNARD, MA 01754 781-899-8822 www.campbell-mccabe.com</p> <p><b>STRUCTURAL ENGINEER</b> <b>SIMPSON GUMPERTZ &amp; HEGER</b> 41 SEYON STREET, BLDG 1, SUITE 500 MAYNARD, MA 01754 781-307-4000 www.sgh.com</p>	<p><b>CIVIL ENGINEER</b> <b>NISCH ENGINEERING</b> 2 CENTER PLAZA, SUITE 430 BOSTON, MA 02115 617-267-9500 www.nischeng.com</p> <p><b>LANDSCAPE DESIGN</b> <b>BROWN, RICHARDSON, &amp; ROWE</b> 125 DOWNE, 3RD FLOOR BOSTON, MA 02115 617-542-8552 www.brownrowe.com</p> <p><b>GEOTECHNICAL CONSULTANT</b> <b>HALEY &amp; ALDRICH, INC.</b> 465 MEDFORD STREET, SUITE 2200 MEDFORD, MA 02155 617-886-7399 www.haleyaldrich.com</p>	<p><b>LIGHTING CONSULTANT</b> <b>SLADEN FENSTEIN INTEG.</b> 100 STATE ST., SUITE 2200 BOSTON, MA 02115 617-267-9500</p> <p><b>SPECIFICATIONS</b> <b>KALIN ASSOCIATES</b> 100 STATE ST., SUITE 2200 BOSTON, MA 02115 617-886-7399</p>
--	---	--

REVISIONS		
NUMBER	DESCRIPTION	DATE

STAMP



KEY PLAN  
DATE: 10/19/15  
SCALE: 1/8" = 1'-0"  
DRAWN BY: C.R.  
PROJECT NUMBER: SART15A.00  
DRAWING TITLE  
**ELECTRICAL**  
**LEVEL 1 NORTH LOBBY**  
**LIGHTING PLAN**  
**5E-204**  
DRAWING NUMBER