

1 BUILDING 3 - ELECTRICAL POWER BRIDGE A PLAN
1/4" = 1'-0"

SHEET NOTES

1. PROVIDE (1)140A-2P, (2)20A-2P AND (1)20A-1P CIRCUIT BREAKER IN PANEL EPP-2. REMOVE SPARE BREAKERS AS REQUIRED TO MAKE SPACE FOR NEW. NEW CIRCUIT BREAKERS ARE TO MATCH EXISTING PANEL/BREAKER CHARACTERISTICS, MANUFACTURER, KAIC, ETC.

KEYED NOTES

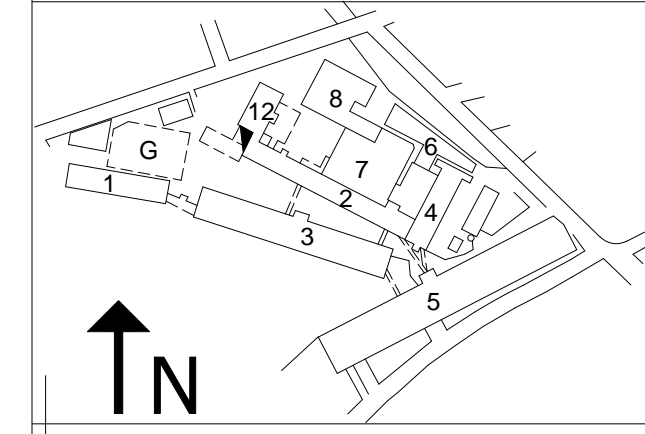
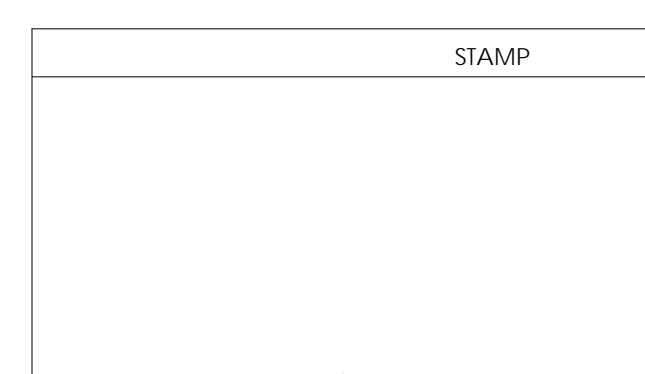
MPA MARGULIES PERRUZZI ARCHITECTS
308 Congress Street | Boston, MA 02210 | 617.882.2322 | www.mp-architects.com
Design for the way you work.

CLIENT INFORMATION
MILL & MAIN RENOVATION
AS CLOCK TOWER OWNER LLC
146 MAIN STREET
MAYNARD, MA 01754

CONSULTANT INFORMATION

<p>MEP ENGINEERS NISSCH ENGINEERING 24 HARTWELL AVE., 3RD FLOOR EDMUNTON, MA 02421 781-572-3500</p>	<p>CIVIL ENGINEER BROWN, RICHARDSON, & ROWE 100 STATE ST., 3RD FLOOR BOSTON, MA 617-542-8552</p>
<p>LANDSCAPE DESIGN BROWN, RICHARDSON, & ROWE 100 STATE ST., 3RD FLOOR BOSTON, MA 617-542-8552</p>	<p>GEOTECHNICAL CONSULTANT HALEY & ALDRICH, INC. 465 MEDFORD STREET, SUITE 2200 MEDFORD, MA 02155 781-388-7399</p>
<p>MEP ENGINEERS AMA CONSULTING ENGINEERS 24 HARTWELL AVE., 3RD FLOOR EDMUNTON, MA 02421 781-572-3500</p>	<p>STRUCTURAL ENGINEER SIMPSON GUMPERTZ & HEGGER 41 SEYON STREET, BLDG 1, SUITE 500 MAYNARD, MA 01754 781-899-8822</p>
<p>HARDWARE CONSULTANT CAMPBELL-MCCABE, INC. 146 MAIN STREET, SUITE 100 MAYNARD, MA 01754 781-899-8822</p>	<p>SPECIFICATIONS KALIN ASSOCIATES 100 STATE ST., SUITE 2200 BOSTON, MA 02129 617-886-7399</p>

REVISIONS		
NUMBER	DESCRIPTION	DATE



KEY PLAN
DATE: 10/19/15
SCALE: As Indicated
DRAWN BY: C.R.
PROJECT NUMBER: SART15A.00
DRAWING TITLE
ELECTRICAL BRIDGE A POWER PLAN
3E-100
DRAWING NUMBER