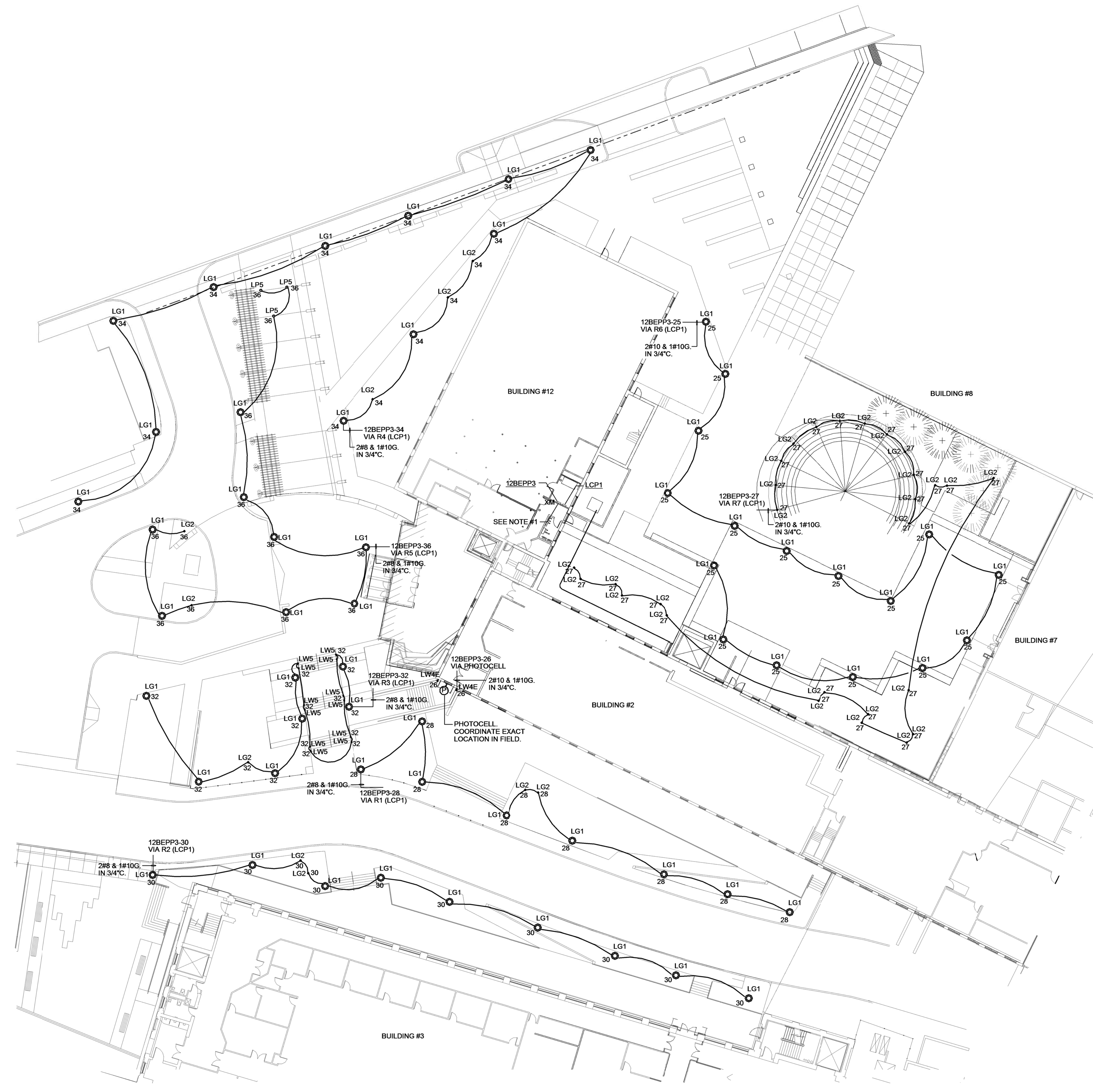


DRAWING NOTES:
 1. PROVIDE (2)20A-1P CIRCUIT BREAKERS IN EXISTING PANEL 12BEPP3. NEW CIRCUIT BREAKERS TO MATCH EXISTING PANEL/BREAKER CHARACTERISTICS, MANUFACTURER, KAIC, ETC..



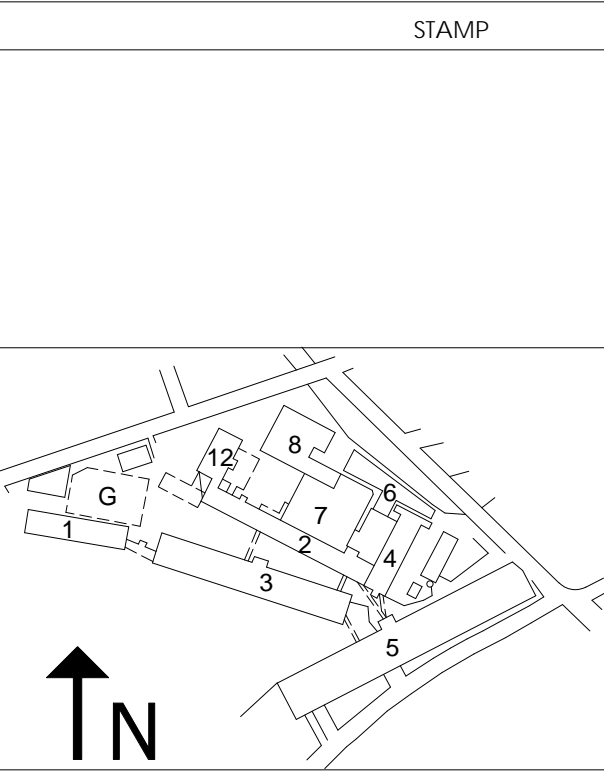
MPA MARGULIES PERRUZZI ARCHITECTS
 308 Congress Street | Boston, MA 02210 | 617.482.2327 | www.mp-architects.com
 Design for the way you work.

CLIENT INFORMATION
MILL & MAIN RENOVATION
 OWNER LLC
 146 MAIN STREET
 MAYNARD, MA 01754

- CONSULTANT INFORMATION
- CIVIL ENGINEER**
 NISCH ENGINEERING
 2 CENTER PLAZA, SUITE 400
 BOSTON, MA 02108
 617.358.0565
 - LANDSCAPE DESIGN**
 BROWN, RICHARDSON, & ROWE
 380 FLOOR
 BOSTON, MA 02109
 617.542.8552
 - GEOTECHNICAL CONSULTANT**
 HALEY & ALDRICH, INC.
 465 MEDFORD STREET, SUITE 2200
 BOSTON, MA 02129
 617.888.3195
 - MECHANICAL ENGINEER**
 SIMPSON GUMPERTZ & HEGGER
 41 SEYON STREET, BLDG 1, SUITE 500
 BOSTON, MA 02129
 781.307.9000
 - HARDWARE CONSULTANT**
 CAMPBELL-MCCABE, INC.
 100 STATE AVENUE, SUITE 100
 MAYNARD, MA 01754
 781.899.8822
 - STRUCTURAL ENGINEER**
 SIMPSON GUMPERTZ & HEGGER
 41 SEYON STREET, BLDG 1, SUITE 500
 BOSTON, MA 02129
 781.307.9000
 - ELECTRICAL ENGINEER**
 KALIN ASSOCIATES
 2 WEST MAIN ST., SUITE 200
 WEST NEWTON, MA 02459
 (617) 994.5477
 - LIGHTING CONSULTANT**
 SLADEN FEINSTEIN INTEG.
 100 STATE AVENUE, # 305
 BOSTON, MA 02115
 617.267.9500

REVISIONS

| NUMBER | DESCRIPTION | DATE |
|--------|-------------|------|
| | | |



DRAWING TITLE
ELECTRICAL BUILDINGS 2,3 & 12 SITE LIGHTING PLAN
2E-202
 DRAWING NUMBER