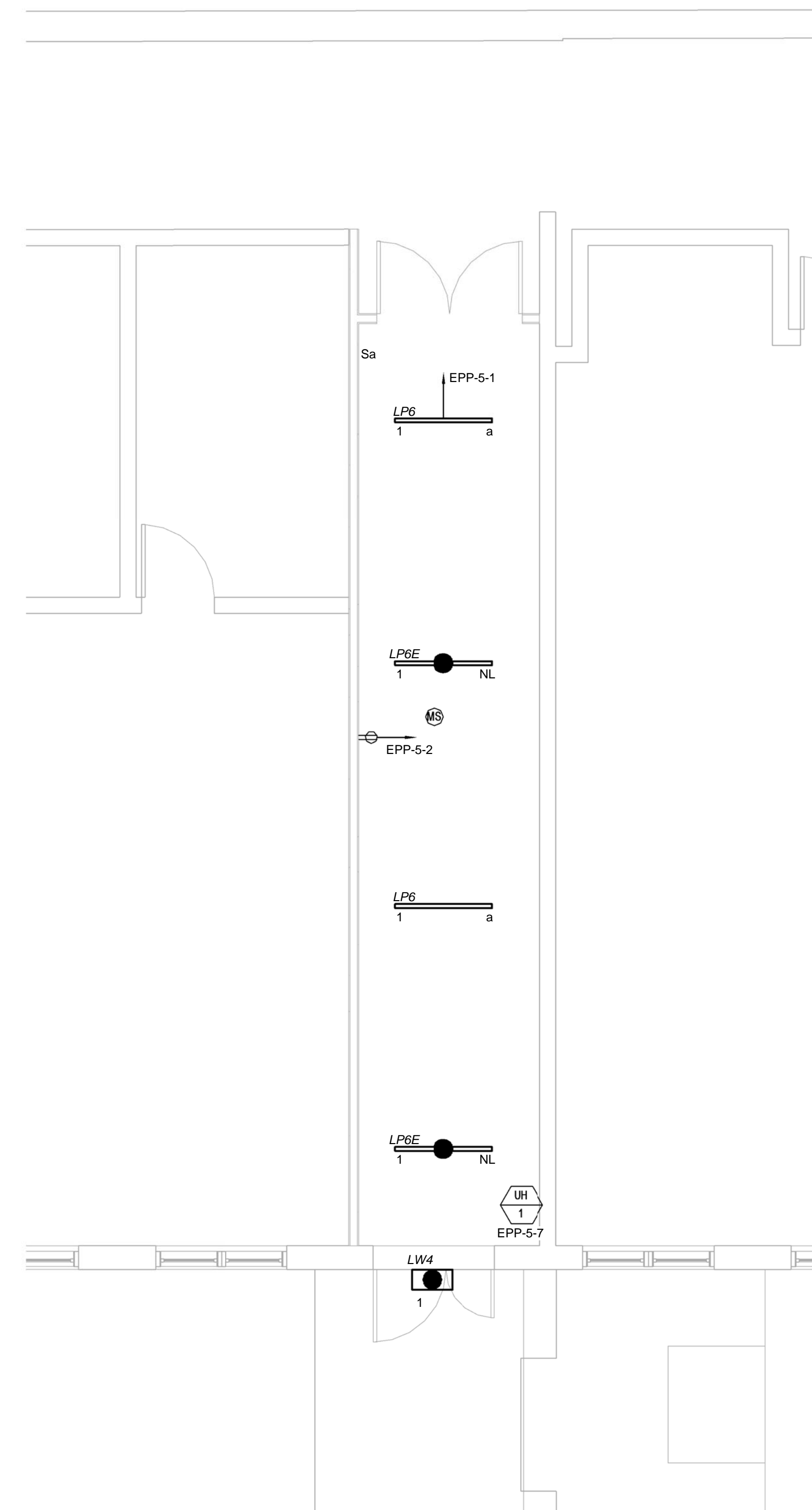


2 Building 12 - Level 3 Electrical New Work Electric Room Part Plan
 2E-103 SCALE: 1/4" = 1'-0"



1 Building 12 - Level 3 Electrical New Work Part Plan
 2E-103 SCALE: 1/4" = 1'-0"

DRAWING NOTES:
 1. PROVIDE (3) NEW 20A-1P CIRCUIT BREAKER IN EXISTING PANEL. MATCH EXISTING PANEL/BREAKER CHARACTERISTICS, KAIC, MANUFACTURER, ETC...

MPA MARGULIES PERRUZZI ARCHITECTS
 308 Congress Street | Boston, MA 02210 | 617.482.2327 | www.mpp-architects.com
 Design for the way you work.

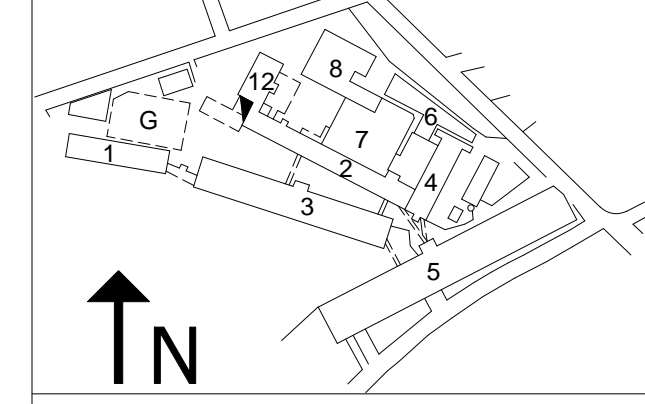
CLIENT INFORMATION
MILL & MAIN RENOVATION
AS CLOCK TOWER OWNER LLC
 146 MAIN STREET
 MAYNARD, MA 01754

CONSULTANT INFORMATION

<p>MEP ENGINEERS MPA MARGULIES PERRUZZI ARCHITECTS 308 CONGRESS STREET BOSTON, MA 02210 617.482.2327</p>	<p>CIVIL ENGINEER NIJCH ENGINEERING 2 CENTER PLAZA, SUITE 400 BOSTON, MA 02108 617.258.0565</p>	<p>SPECIFICATIONS KALIN ASSOCIATES 100 STATE STREET, # 200 WEST NEWTON, MA 02459 (617) 944.5477</p>	<p>LANDSCAPE DESIGN BROWN, RICHARDSON, & ROWE 100 STATE STREET, 3RD FLOOR BOSTON, MA 02109 617.542.8552</p>	<p>LIGHTING CONSULTANT SLADEN FEINSTEIN INTEG. 100 STATE STREET, # 205 BOSTON, MA 02115 617.267.9500</p>
<p>MEP ENGINEERS AHA CONSULTING ENGINEERS 24 HARTWELL AVE., 3RD FLOOR EDMUNTON, MA 02421 781.572.5500</p>	<p>LANDSCAPE DESIGN BROWN, RICHARDSON, & ROWE 100 STATE STREET, 3RD FLOOR BOSTON, MA 02109 617.542.8552</p>	<p>STRUCTURAL ENGINEER SIMPSON GUMPERTZ & HEGGER 41 SEYON STREET, BLDG 1, SUITE 500 BOSTON, MA 02129 781.307.9000</p>	<p>GEOTECHNICAL CONSULTANT HALEY & ALDRICH, INC. 465 MEDFORD STREET, SUITE 2200 BOSTON, MA 02129 617.886.7399</p>	<p>MEP ENGINEERS MPA MARGULIES PERRUZZI ARCHITECTS 308 CONGRESS STREET BOSTON, MA 02210 617.482.2327</p>

REVISIONS		
NUMBER	DESCRIPTION	DATE

STAMP



DATE: 10/19/15
 SCALE: 1/4" = 1'-0"
 DRAWN BY: C.R.
 PROJECT NUMBER: SART15A.00
 DRAWING TITLE
**ELECTRICAL BUILDING 2
 LEVEL 3 ENTRY**
2E-103
 DRAWING NUMBER