

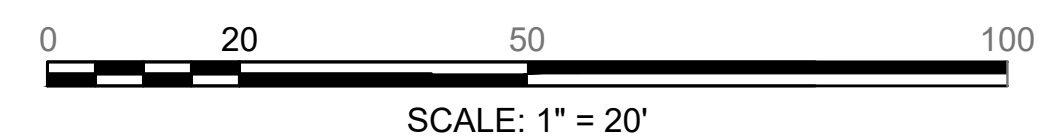
STA 50+00.00
 N 2982420.7517
 E 667873.2053

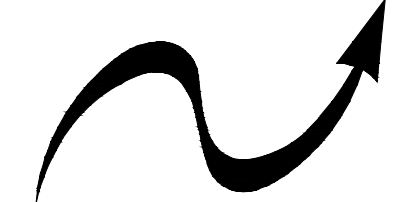
STA 53+47.11
 N 2982758.0976
 E 667852.8435

I CERTIFY THAT THIS PLAN HAS BEEN PREPARED IN CONFORMITY WITH THE RULES AND REGULATIONS OF THE REGISTERS OF DEEDS OF THE COMMONWEALTH OF MASSACHUSETTS.

FOR REVIEW

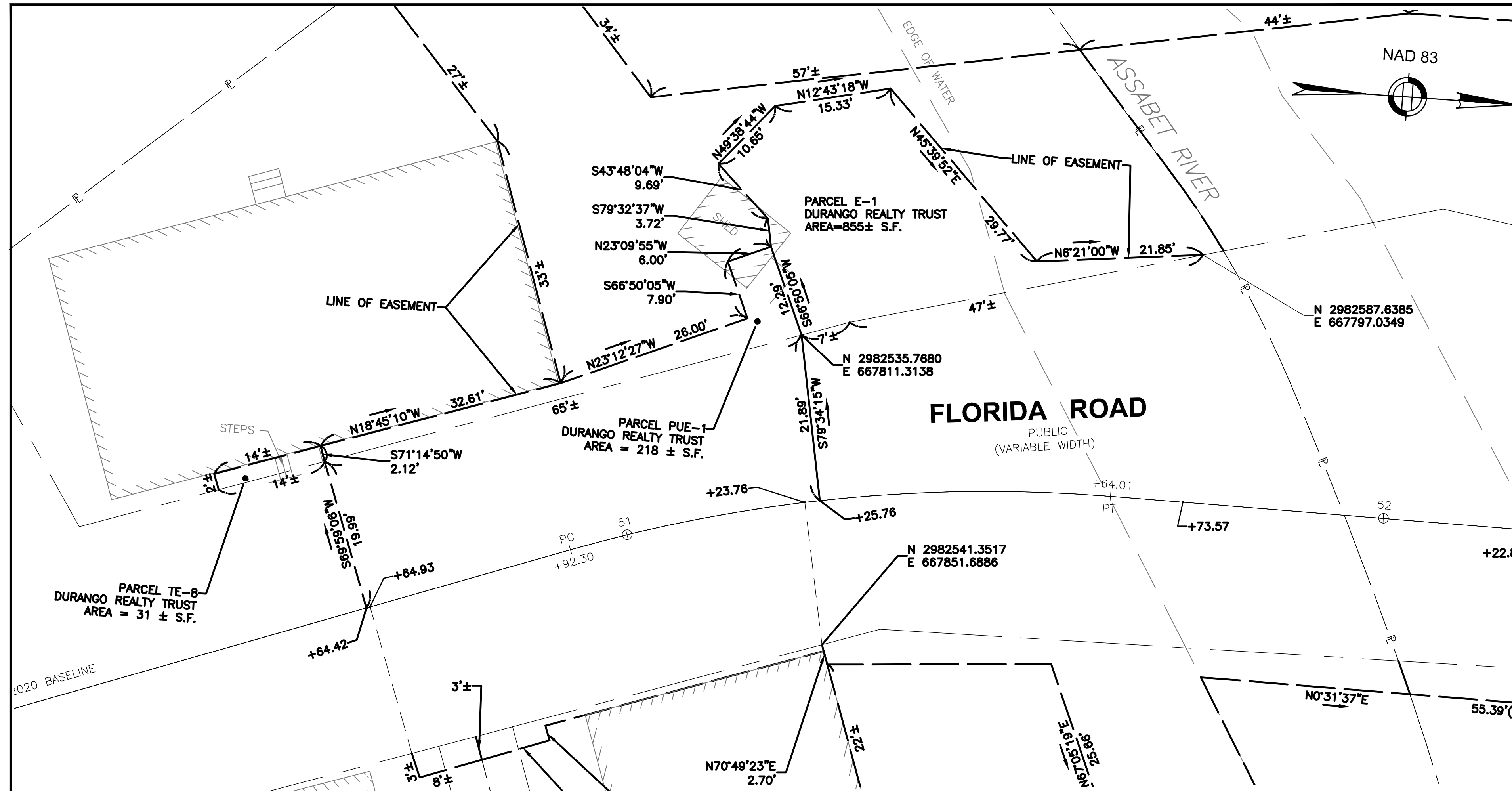
DATE _____ MARK E. VIOLETTE, PLS #40768




Nitsch Engineering
 www.nitscheng.com
 370 Main Street, Suite 850
 Worcester, MA 01608
 T: (508) 365-1030
 F: (617) 338-6472

PLAN OF LAND IN THE TOWN OF
MAYNARD
 MIDDLESEX COUNTY
 SHOWING LOCATION OF PERMANENT AND TEMPORARY EASEMENTS
 TAKEN BY THE TOWN OF MAYNARD
 DATE: MAY 14, 2021
 SCALE: 20 FEET TO THE INCH

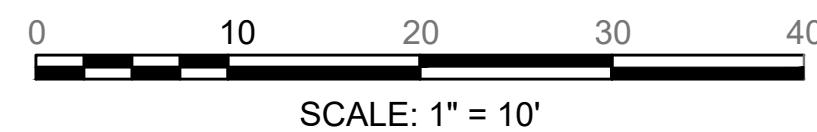
MAYNARD-2020 ALTERATION-SHEET 2 OF 2 SHEETS
 PROJECT FILE NO. 608637
 BRIDGE NO. M-10-006



NOTES

1. THE EXISTING MONUMENTATION SHOWN ON THIS PLAN AND THE LOCATION OF THE EXISTING LAYOUT LINES ARE FROM A FIELD SURVEY PROVIDED BY CME ENGINEERING AND REVIEWED BY NTSCH ENGINEERING.
2. ABUTTERS PROPERTY LINES DEPICTED HEREON ARE APPROXIMATE ONLY AND ARE BASED UPON RECORD DEEDS, PLANS, ASSESSORS AND LIMITED ON THE GROUND INSTRUMENT SURVEY. RECORD DEEDS AND PLANS MAY CONTAIN MATHEMATICAL DISCREPANCIES AND INCONSISTENCIES, WHICH WERE NOT RESOLVED WITH THIS SURVEY.
3. THE HORIZONTAL DATUM SHOWN HEREON REFERENCES THE MASSACHUSETTS STATE PLANE COORDINATE SYSTEM, MAINLAND ZONE, NAD83(2011) EPOCH 2010.0, US SURVEY FOOT.
4. THIS PLAN WAS PREPARED WITHOUT THE BENEFIT OF A TITLE SEARCH AND MAY NOT DISCLOSE ANY MATTERS THAT MAY BE REVEALED BY ONE.
5. THIS PLAN DOES NOT SHOW UNWRITTEN OR UNRECORDED EASEMENTS WHICH MAY EXIST. A REASONABLE AND DILIGENT ATTEMPT HAS BEEN MADE TO OBSERVE ANY APPARENT AND VISIBLE USES OF THE LAND. THIS PLAN DOES NOT GUARANTEE THAT NO SUCH EASEMENTS EXIST.
6. LEGAL STATUS OF EASEMENTS, WAYS AND RESTRICTIONS NOT DETERMINED BY THIS SURVEY.
7. WATER BOUNDARIES ARE SUBJECT TO CHANGE DUE TO NATURAL CAUSES AND THE WATER BOUNDARIES SHOWN HEREON MAY OR MAY NOT REPRESENT THE ACTUAL LOCATION OF THE LIMIT OF TITLE.

DETAIL (SEE SHEET 1)



I CERTIFY THAT THIS PLAN HAS BEEN PREPARED IN CONFORMITY WITH THE RULES AND REGULATIONS OF THE REGISTERS OF DEEDS OF THE COMMONWEALTH OF MASSACHUSETTS.

FOR REVIEW

DATE _____ MARK E. VIOLETTE, PLS #40768

Nitsch Engineering
www.nitscheng.com
 370 Main Street, Suite 850
 Worcester, MA 01608
 T: (508) 365-1030
 F: (617) 338-6472

PLAN OF LAND IN THE TOWN OF
MAYNARD
 MIDDLESEX COUNTY
 SHOWING LOCATION OF PERMANENT AND TEMPORARY EASEMENTS
 TAKEN BY THE TOWN OF MAYNARD
 DATE: MAY 14, 2021
 SCALE: 10 FEET TO THE INCH