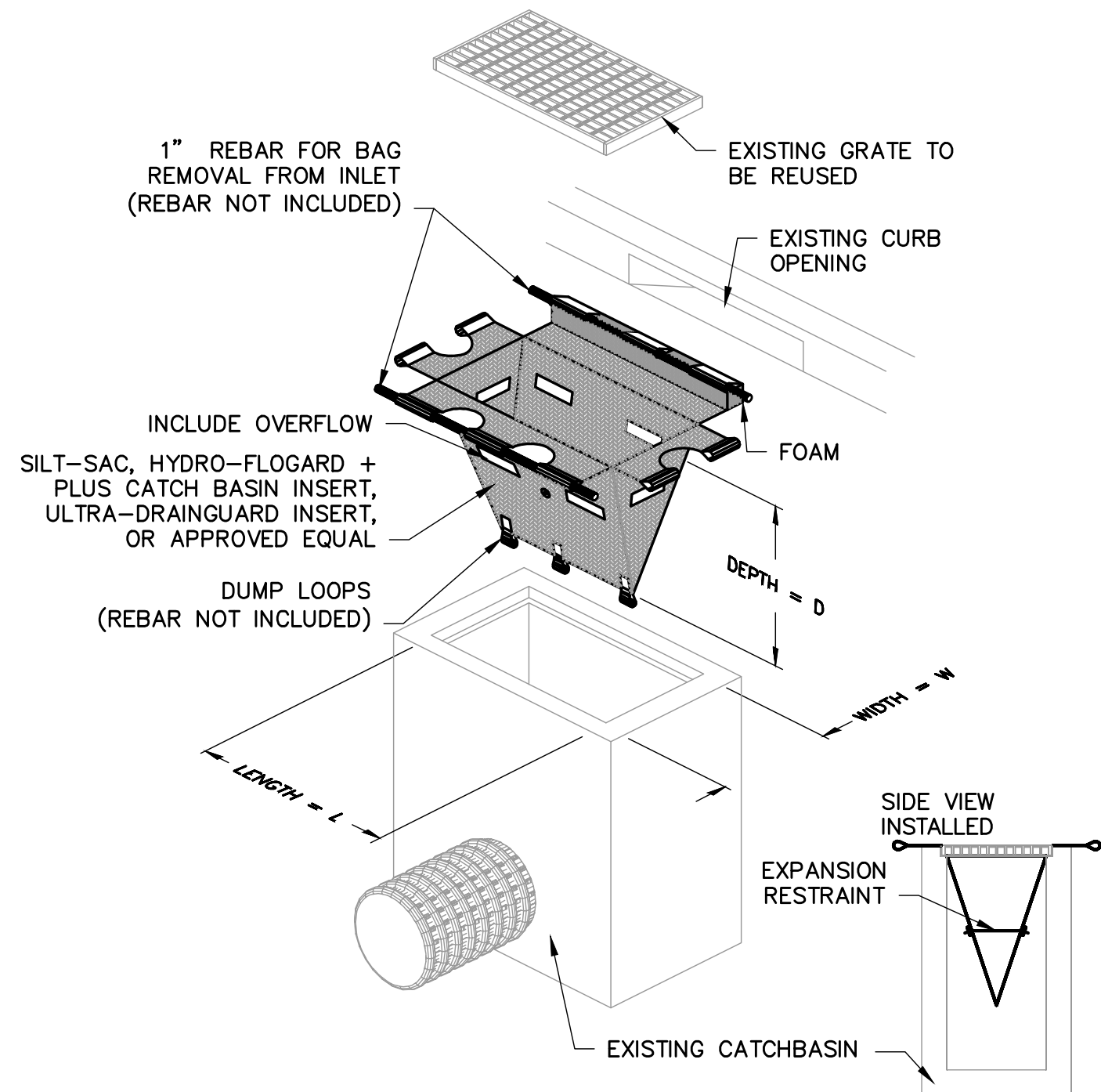


THIS METHOD OF INLET PROTECTION IS APPLICABLE WHERE HEAVY FLOWS ARE EXPECTED, BUT NOT WHERE PONDING AROUND THE STRUCTURE MIGHT CAUSE EXCESSIVE INCONVENIENCE OR DAMAGE TO ADJACENT STRUCTURES AND UNPROTECTED AREAS. THIS METHOD NOT ACCEPTABLE IN ACTIVE TRAFFIC AREAS.

**INLET PROTECTION ①
CATCH BASIN W/ GRAVEL**

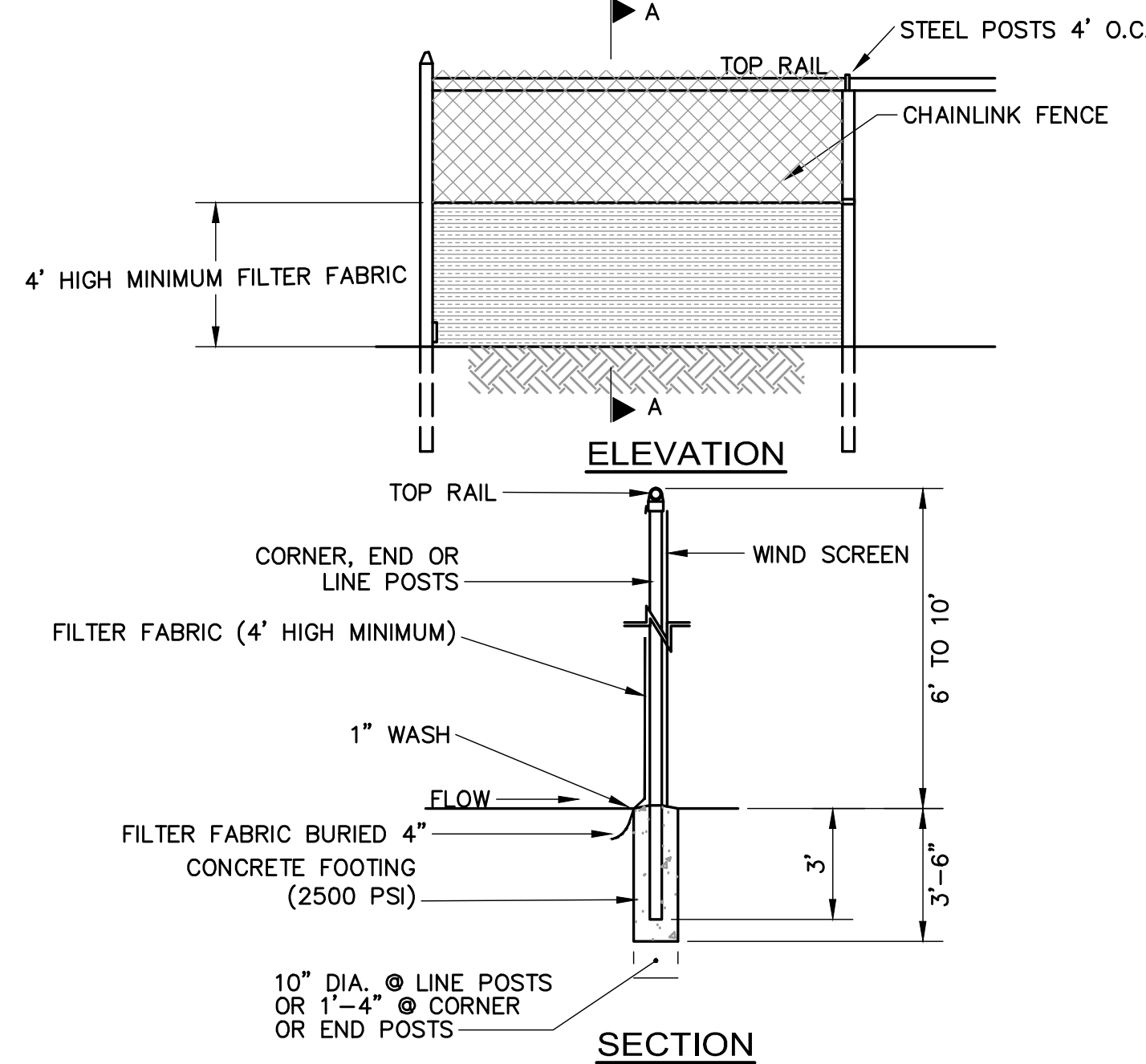
NOT TO SCALE



THIS METHOD OF INLET PROTECTION IS APPLICABLE WHERE THE INLET DRAINS SHEET, OVERLAND OR CONCENTRATED FLOWS (NOT GREATER THAN 1 CFS). THE METHOD CAN DRAIN FLAT AREA TO STEEP SLOPES. INLET CAPACITY WILL BE DECREASED WITH THIS METHOD AND THE CONTRACTOR SHALL EXPECT PONDING DURING HIGH FLOW EVENTS.

**INLET PROTECTION ②
CATCH BASIN W/ SILTATION SACK**

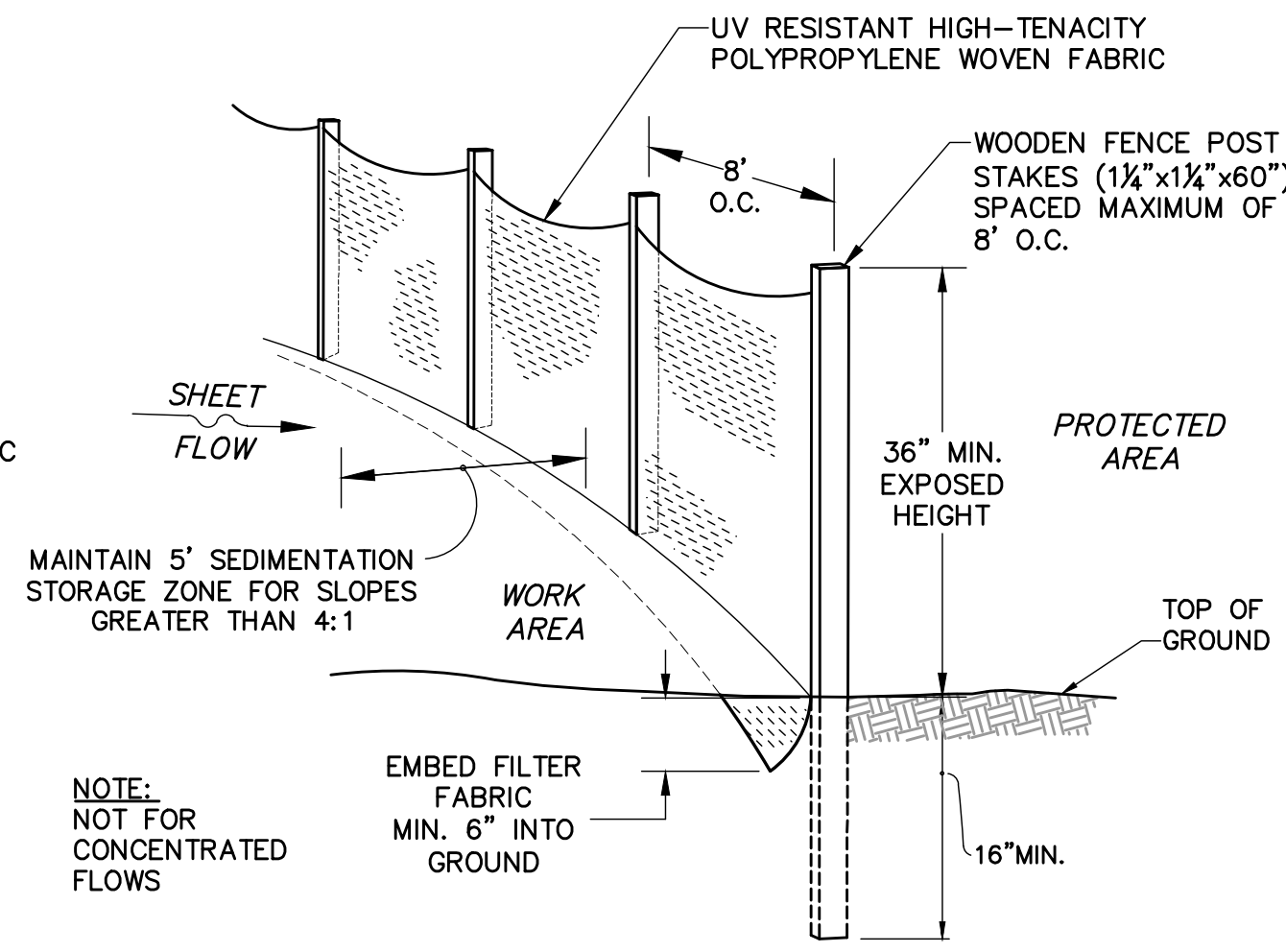
NOT TO SCALE



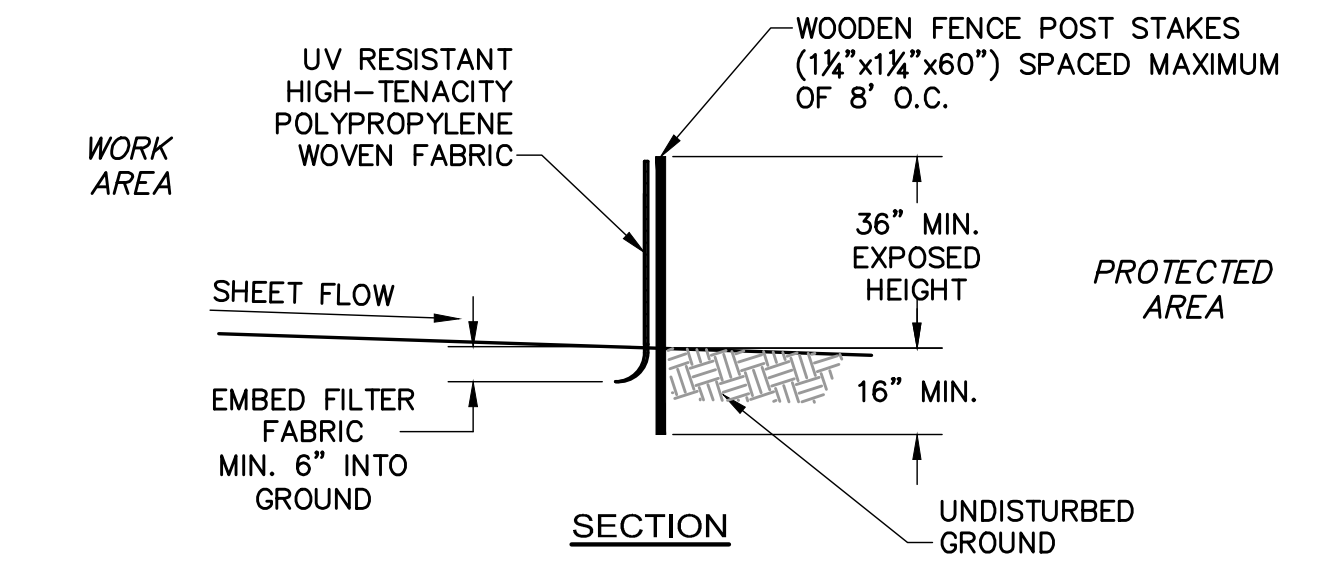
- CHAINLINK FENCE SHALL BE FASTENED SECURELY TO FENCE POSTS WITH WIRE TIES.
- FILTER FABRIC SHALL BE FASTENED SECURELY TO CHAINLINK FENCE WITH TIES SPACED HORIZONTALLY 24" AS THE TOP AND MIDSECTION.
- WHEN TWO SECTIONS OF FILTER FABRIC ADJOIN EACH OTHER, THEY SHALL BE OVERLAPPED BY 6"
- MAINTENANCE SHALL BE PERFORMED AS NEEDED AND MATERIAL SHALL BE REMOVED WHEN SEDIMENT BUILD-UP REACHES 50% OF THE HEIGHT OF THE FILTER FABRIC.
- MAINTENANCE OF SILT FENCE SHALL BE RECORDED TO IN THE SWPPP

**EROSION CONTROL BARRIER ④
SUPER SILT FENCE**

NOT TO SCALE

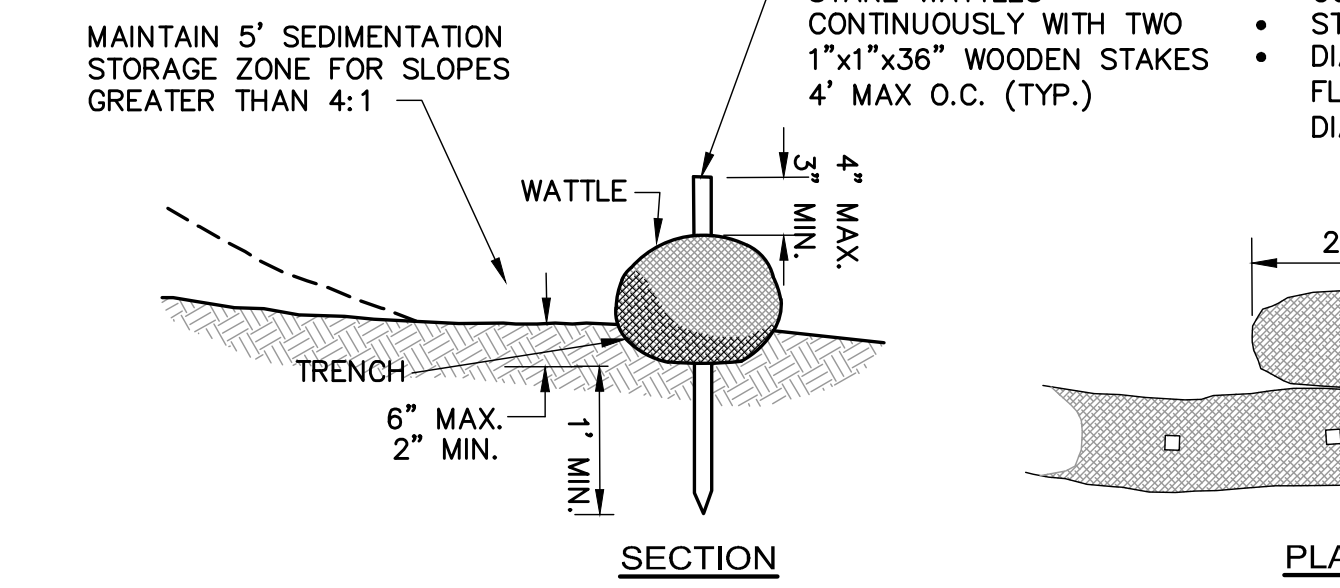


PERSPECTIVE VIEW



**PERIMETER PROTECTION BARRIER ①
SILT FENCE DETAIL**

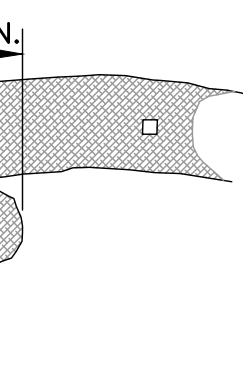
NOT TO SCALE



**WATTLES - SLOPE PROTECTION FOR
SLOPES LESS THAN 10:1**

NOT TO SCALE

- TYPES OF WATTLES
- COIR (COCONUT FIBER)
 - COMPOST
 - STRAW
 - DIAMETER BASED FLOW/MANUFACTURE MINIMUM DIAMETER 12" RECOMMENDATIONS



WATTLE SPACING TABLE	SLOPE	MAX. SPACING
1:1	10'-0"	
2:1	20'-0"	
3:1	30'-0"	
4:1	40'-0"	

WATTLE SLOPE PROTECTION NOTES:

- SECURELY KNOT EACH END OF WATTLE. ABUT ADJACENT WATTLES TIGHTLY, END TO END, WITHOUT OVERLAPPING THE ENDS.
- PILOT HOLES MAY BE DRIVEN THROUGH THE WATTLES AND INTO THE SOIL WHEN SOIL CONDITIONS REQUIRE
- WATTLES SHALL BE INSPECTED REGULARLY, AND IMMEDIATELY AFTER A RAINFALL, PRODUCES RUNOFF, TO ENSURE THEY REMAIN THOROUGHLY ENTRENCHED AND IN CONTACT WITH THE SOIL.
- ONLY INSTALL WATTLE(S) TO A HEIGHT IN DITCH SO FLOW WILL NOT WASH AROUND WATTLE AND SCOUR DITCH SLOPES AND AS DIRECTED.

**EROSION CONTROL BARRIER ⑤
WATTLES - STEEP SLOPE PROTECTION**

NOT TO SCALE

- TYPES OF WATTLES
- COIR (COCONUT FIBER)
 - COMPOST
 - STRAW



INSERT A

SECTION A

CROSS SECTION VEE DITCH

CROSS SECTION TRAPEZOIDAL DITCH

SECTION A-A

PLAN

SECTION A-A

PLAN

SECTION A-A

PLAN

SECTION A-A

PLAN

SECTION A-A

PLAN

SECTION A-A

PLAN

SECTION A-A

PLAN

SECTION A-A

PLAN

SECTION A-A

PLAN

SECTION A-A

PLAN

SECTION A-A

PLAN

SECTION A-A

PLAN

SECTION A-A

PLAN

SECTION A-A

PLAN

SECTION A-A

PLAN

SECTION A-A

PLAN

SECTION A-A

PLAN

SECTION A-A

PLAN

SECTION A-A

PLAN

SECTION A-A

PLAN

SECTION A-A

PLAN

SECTION A-A

PLAN

SECTION A-A

PLAN

SECTION A-A

PLAN

SECTION A-A

PLAN

SECTION A-A

PLAN

SECTION A-A

PLAN

SECTION A-A

PLAN

SECTION A-A

PLAN

SECTION A-A

PLAN

SECTION A-A

PLAN

SECTION A-A

PLAN

SECTION A-A

PLAN

SECTION A-A

PLAN

SECTION A-A

PLAN

SECTION A-A

PLAN

SECTION A-A

PLAN

SECTION A-A

PLAN

SECTION A-A

PLAN

SECTION A-A

PLAN

SECTION A-A

PLAN

SECTION A-A

PLAN

SECTION A-A

PLAN

SECTION A-A

PLAN

SECTION A-A

PLAN

SECTION A-A

PLAN

SECTION A-A

PLAN

SECTION A-A

PLAN

SECTION A-A

PLAN

SECTION A-A

PLAN

SECTION A-A

PLAN

SECTION A-A

PLAN

SECTION A-A

PLAN

SECTION A-A

PLAN

SECTION A-A

PLAN

SECTION A-A

PLAN

SECTION A-A

PLAN

SECTION A-A

PLAN

SECTION A-A

PLAN

SECTION A-A

PLAN

SECTION A-A

PLAN

SECTION A-A

PLAN

SECTION A-A

PLAN

SECTION A-A

PLAN

SECTION A-A

PLAN

SECTION A-A

PLAN

SECTION A-A

PLAN

SECTION A-A

PLAN

SECTION A-A

PLAN

SECTION A-A

PLAN

SECTION A-A

PLAN

SECTION A-A

PLAN

SECTION A-A

PLAN

SECTION A-A

PLAN

SECTION A-A

PLAN

SECTION A-A

PLAN

SECTION A-A

PLAN

SECTION A-A

PLAN

SECTION A-A

PLAN

SECTION A-A

PLAN

SECTION A-A

PLAN

SECTION A-A

PLAN

SECTION A-A

PLAN

SECTION A-A

PLAN

SECTION A-A

PLAN

SECTION A-A

PLAN

SECTION A-A

PLAN

SECTION A-A

PLAN

SECTION A-A

PLAN

SECTION A-A

PLAN

SECTION A-A

PLAN

SECTION A-A

PLAN

SECTION A-A

PLAN

SECTION A-A

PLAN

SECTION A-A

PLAN

SECTION A-A

PLAN

SECTION A-A

PLAN

SECTION A-A

PLAN

SECTION A-A

PLAN

SECTION A-A

PLAN

SECTION A-A

PLAN

SECTION A-A

PLAN

SECTION A-A

PLAN

SECTION A-A

PLAN

SECTION A-A

PLAN

SECTION A-A

PLAN

SECTION A-A

PLAN

SECTION A-A

PLAN

SECTION A-A

PLAN

SECTION A-A

PLAN

SECTION A-A

PLAN

SECTION A-A

PLAN

SECTION A-A

PLAN

SECTION A-A

PLAN

SECTION A-A

PLAN

SECTION A-A